

michael miller FABRICS

LIFE IN A FISHBOWL QUILT

SIZE 81"W X 95"H | LEVEL CONFIDENT BEGINNER | PATTERN BY WENDY SHEPPARD

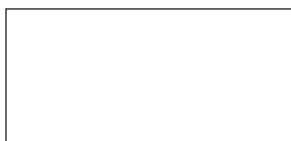


FREE PATTERN AVAILABLE ON MICHAELMILLERFABRICS.COM

*THIS IS A DIGITAL REPRESENTATION OF THE QUILT TOP. FABRIC MAY VARY.

FABRIC REQUIREMENTS

WE DO OUR BEST TO MAKE SURE THESE ARE ACCURATE YARDAGES
BUT THESE ARE ESTIMATES UNTIL THE FINAL PATTERN IS COMPLETED AND EDITED. THANK YOU.



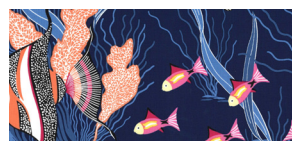
SC5333 BRIGHT WHITE
COTTON COUTURE
1-5/8 YARDS



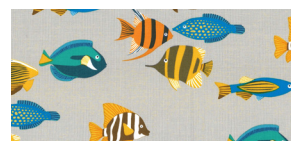
SC5333 BOY
COTTON COUTURE
3-3/8 YARDS



CX8392 CREAM
SEASCAPE
3/8 YARD



CX8392 NAVY
SEASCAPE
3/8 YARD



CX8393 TAUPE
FISHTOPIA
3/8 YARD



CX8393 PINK
FISHTOPIA
3/8 YARD



CX8393 BLUE
FISHTOPIA
3/8 YARD



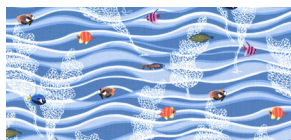
CX8393 AQUA
FISHTOPIA
1/4 YARD



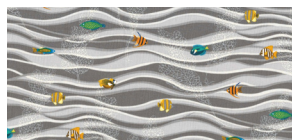
CX8393 BLACK
FISHTOPIA
1/4 YARD



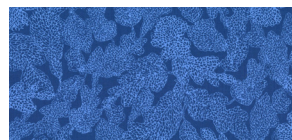
CX8393 WHITE
FISHTOPIA
1/4 YARD



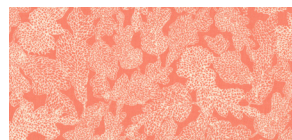
CX8394 BLUE
HAZY GLAZE
1-1/4 YARDS



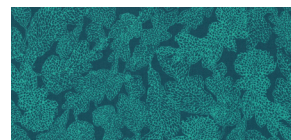
CX8394 TAUPE
HAZY GLAZE
1/4 YARD



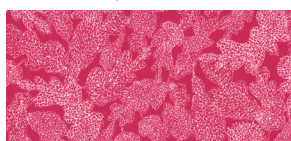
CX8395 BLUE
CORAL LACE
1/4 YARD



CX8395 CORAL
CORAL LACE
1/4 YARD



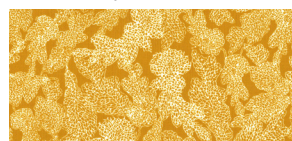
CX8395 EMERALD
CORAL LACE
1/4 YARD



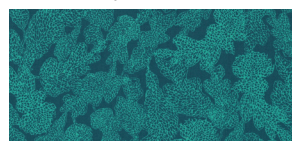
CX8395 FUCHSIA
CORAL LACE
1/4 YARD



CX2490 PERSIMMON
DUMB DOT
1/4 YARD



CX8395 GOLD
CORAL LACE
1/4 YARD



(BINDING)
CX8395 EMERALD
3/4 YARD



(BACKING)
YOUR CHOICE
8-5/8 YARDS

FABRIC REQUIREMENTS

SKU	YARDAGE PER ONE QUILT	# OF BOLTS FOR 12 KITS	# OF BOLTS FOR 24 KITS
(A) SC5333 BRIGHT WHITE	1-5/8 YARDS	2 BOLTS (19-1/2 YARDS)	4 BOLTS (39 YARDS)
(B) SC5333 BOY	3-3/8 YARDS	4 BOLTS (40-1/2 YARDS)	7 BOLTS (81 YARDS)
(C) CX8392 CREAM	3/8 YARD	1 BOLT (4-1/2 YARDS)	1 BOLT (9 YARDS)
(D) CX8392 NAVY	3/8 YARD	1 BOLT (4-1/2 YARDS)	1 BOLT (9 YARDS)
(E) CX8393 TAUPE	3/8 YARD	1 BOLT (4-1/2 YARDS)	1 BOLT (9 YARDS)
(F) CX8393 PINK	3/8 YARD	1 BOLT (4-1/2 YARDS)	1 BOLT (9 YARDS)
(G) CX8393 BLUE	3/8 YARD	1 BOLT (4-1/2 YARDS)	1 BOLT (9 YARDS)
(H) CX8393 AQUA	1/4 YARD	1 BOLT (3 YARDS)	1 BOLT (6 YARDS)
(I) CX8393 BLACK	1/4 YARD	1 BOLT (3 YARDS)	1 BOLT (6 YARDS)
(J) CX8393 WHITE	1/4 YARD	1 BOLT (3 YARDS)	1 BOLT (6 YARDS)
(K) CX8394 BLUE	1-1/4 YARDS	1 BOLT (15 YARDS)	2 BOLTS (30 YARDS)
(L) CX8394 TAUPE	1/4 YARD	1 BOLT (3 YARDS)	1 BOLT (6 YARDS)
(M) CX8395 BLUE	1/4 YARD	1 BOLT (3 YARDS)	1 BOLT (6 YARDS)
(N) CX8395 CORAL	1/4 YARD	1 BOLT (3 YARDS)	1 BOLT (6 YARDS)
(O) CX8395 EMERALD	1/4 YARD	1 BOLT (3 YARDS)	1 BOLT (6 YARDS)
(P) CX8395 FUCHSIA	1/4 YARD	1 BOLT (3 YARDS)	1 BOLT (6 YARDS)
(Q) CX2490 PERSIMMON	1/4 YARD	1 BOLT (3 YARDS)	1 BOLT (6 YARDS)
(R) CX8395 GOLD	1/4 YARD	1 BOLT (3 YARDS)	1 BOLT (6 YARDS)
(BINDING) CX8395 EMERALD	3/4 YARD	1 BOLT (9 YARDS)	2 BOLTS (18 YARDS)
(BACKING) YOUR CHOICE	8-5/8 YARDS	7 BOLTS (103-1/2 YARDS)	13 BOLTS (207 YARDS)
TOTAL BOLTS NEEDED		32 BOLTS (25 W/O BACK)	43 BOLTS (30 W/O BACK)

Fishtopia

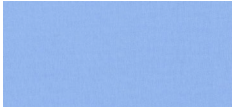









Finished Quilt Size: 81" x 95"

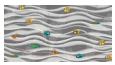


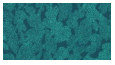



Finished Block Size: 12" x 12"

Binding: 3/4y CX8395 Emerald, cut into 2 1/4" strips and pieced to make a continuous binding strip

Backing: 87" x 101" piece of backing fabric (8 5/8y for 42" wide fabric)

Fabrics and cutting:

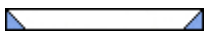
Fabric	Ydgs	Cutting directions:
<p>Color Couture Bright White</p>	<p>1 5/8y</p>	<p>a. Fish bowl blocks (30) (1) 10 1/2" x wof. Subcut (27) 1 1/2" x 10 1/2" rectangles. (2) 12 1/2" x wof. Subcut (30) 2" x 12 1/2" and (3) 1 1/2" x 10 1/2" rectangles. b. inner border #2 (8) 2" x wof. Piece strips and subcut (2) 2" x 75 1/2" and (2) 2" x 86 1/2" strips.</p>
 <p>Color Couture Boy</p>	<p>3 3/8y</p>	<p>a. Fish bowl blocks (30) (15) 1 1/2" x wof. Subcut (30) 1 1/2" x 12 1/2" rectangles from (10) strips, and (120) 1 1/2" x 1 1/2" squares from remaining (5) strips. (12) 2 1/2" x wof. Subcut (180) 2 1/2" x 2 1/2" squares. b. sashing rectangles (8) 2 1/2" x wof. Subcut (24) 2 1/2" x 12 1/2" rectangles. c. sashing strips (9) 2 1/2" x wof. Piece strips and subcut (5) 2 1/2" x 68 1/2" strips. d. inner border #1 (8) 2 1/2" x wof. Piece strips and subcut (2) 2 1/2" x 72 1/2" and (2) 2 1/2" x 82 1/2" strips.</p>
 <p>CX8392 Cream</p>  <p>CX8392 Navy</p>  <p>CX8393 Taupe</p>  <p>CX8393 Pink</p>  <p>CX8393 Blue</p>	<p>3/8y</p>	<p>Designer's note: Care should be exercised in cutting. The designated yardage is enough to cut (2) 6 1/2" x wof in case cutting error occurs, but it will be tight. (1) 6 1/2" x wof technically cuts exactly (4) 6 1/2" x 12 1/2" rectangles.</p> <p>a. Fish bowl blocks (4) (1) 6 1/2" x wof. Subcut (4) 6 1/2" x 12 1/2" rectangles.</p>
 <p>CX8393 Aqua</p>  <p>CX8393 Black</p>	<p>1/4y</p>	<p>a. Fish bowl blocks (3) (1) 6 1/2" x wof. Subcut (3) 6 1/2" x 12 1/2" rectangles.</p>
 <p>CX8393 White</p>	<p>1/4y</p>	<p>a. Fish bowl blocks (2) (1) 6 1/2" x wof. Subcut (2) 6 1/2" x 12 1/2" rectangles.</p>
 <p>CX8394 Blue</p>	<p>1 1/4y</p>	<p>a. Fish bowl blocks (2) (1) 6 1/2" x wof. Subcut (2) 6 1/2" x 12 1/2" rectangles. b. outer border (9) 3 1/2" x wof. Piece strips and subcut (2) 3 1/2" x 81 1/2" and (2) 3 1/2" x 89 1/2" strips.</p>

 CX8394 Taupe	 CX8395 Blue	1/4y	a. Fish bowl blocks (4) (2) 2 1/2" x wof. Subcut (4) 2 1/2" x 12 1/2" rectangles.
 CX8395 Coral	 CX8395 Emerald		
 CX8395 Fuschia	 CX2490 Persimmon		
 CX8395 Gold	1/4y	a. Fish bowl blocks (6) (2) 2 1/2" x wof. Subcut (6) 2 1/2" x 12 1/2" rectangles.	

Constructing fish bowl block

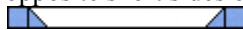
Note: Fish bowl block is constructed in horizontal sections from top to bottom.

- Section 1: (1) 1 1/2" x 12 1/2" Boy solid rectangle.
- Section 2: Draw a diagonal line on the wrong side of (1) 1 1/2" x 1 1/2" Boy solid square. Place square, right sides together, at a corner of (1) 1 1/2" x 10 1/2" Bright White solid rectangle. Sew on drawn line. Trim 1/4" away from sewn line. Open and press to reveal Boy corner triangle. Repeat with another 1 1/2" x 1 1/2" Boy solid square



at the opposite corner of the same Bright White solid rectangle.

Add (2) 1 1/2" x 1 1/2" Boy solid squares to the opposite short sides of previously made unit.



- Section 3: Sew (1) 2" x 12 1/2" Bright White solid rectangle to the top of (1) 6 1/2" x 12 1/2" **print1** rectangle. Draw a diagonal line on the wrong side of (1) 2 1/2" x 2 1/2" Boy solid square. Place square, right sides together, at a corner of previously sewn unit. Sewn on drawn line. Trim 1/4" away from sewn line. Open and press to reveal Boy corner triangle. Repeat with (3) additional 2 1/2" x 2 1/2" Boy solid squares at the remaining corners of the same



sewn unit.

- Section 4. Draw a diagonal line on the wrong side of (1) 2 1/2" x 2 1/2" Boy solid square. Place square, right sides together, at a corner of (1) 2 1/2" x 12 1/2" **print2** rectangle. Sew on drawn line. Trim 1/4" away from sewn line. Open and press to reveal Boy corner triangle. Repeat with another 2 1/2" x 2 1/2" Boy solid square at the

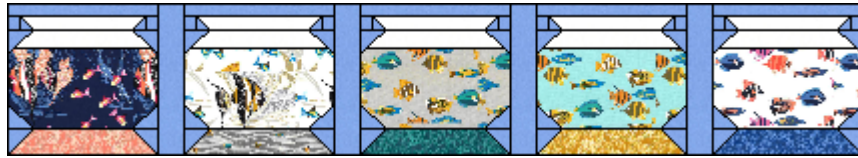


opposite corner of the same 2 1/2" x 12 1/2" **print2** rectangle.

- Sew together Sections 1-4 to complete (1) fish bowl blocks.
- Make a total number of blocks in the following **print1/print2** combinations:
4 blocks - CX8391 Navy/CX8395 Coral, CX8392 Cream/CX8394 Taupe, CX8393 Taupe/CX8395 Emerald, CX8393 Pink/CX2490 Persimmon, CX8393 Blue, CX8395 Fuschia
3 blocks - CX8393 Aqua/CX8395 Gold, CX8393 Black/CX8395 Gold
2 blocks - CX8393 White/CX8395 Blue, CX8394 Blue/CX8394 Blue

Quilt Center Assembly

- Pieced rows. Referring to quilt image for block placement guide, arrange and sew together (5) fish bowl blocks and (4) 2 1/2" x 12 1/2" Blue solid sashing rectangles to make a pieced row. Row 1 is shown below as example. Make a total of (6) pieced rows.



2. Sew together pieced rows and (5) 2 1/2" x 68 1/2" Boy sashing strips to complete quilt center.
 [Note to Minnie: I will need your help to redraw the quilt center center to show that the sashing strips are whole , rather than pieced.]



Quilt Top Assembly

1. Inner border #1. Sew (2) 2 1/2" x 82 1/2" Blue solid strips to the opposite long sides of quilt center, followed by (2) 2 1/2" x 72 1/2" Blue solid strips to the remaining opposite short sides of quilt center.
2. Inner border #2. Sew (2) 2" x 86 1/2" Bright White solid strips to the opposite long sides of quilt center, followed by (2) 2" x 75 1/2" Bright White solid strips to the remaining opposite short sides of quilt center.
3. Outer border. Sew (2) 3 1/2" x 89 1/2" CX8394 Blue strips to the opposite long sides of quilt center, followed by (2) 3 1/2" x 81 1/2" CX8394 Blue strips to the remaining opposite short sides of quilt center to complete quilt top.

