

Q-2009



Beginner

Bonita Quilt

60 X 60" (152 x 152 cm)

FABRIC REQUIREMENT:

Fabrics from series „Bonita”, „Melange” & „Quilters Shadow”, all 44" (112 cm) wide.

Danish Design 




Idea, design and sewing:
John Kubiniec

OTHER SUPPLIES:

Batting: Matilda's Own 99M600, 94" (240 cm) wide 63" (1,6 m)

In addition: Matching threads and quilting threads.

The Basics: Whenever this symbol  appears in the directions, you will find a detailed explanation for "Sewing Basics" in the website www.stofffabrics.com under Inspiration.

CUTTING :

¼" (0,75 cm) seam allowance is included.

Fabric A:	8 Squares	6½ x 6½" (16,5 x 16,5 cm)
Fabric A:	9 Squares	7 x 7" (18 x 18 cm) then cut each of in half on the diagonal
Fabric B:	11 Squares	6½ x 6½" (16,5 x 16,5 cm)
Fabric B:	6 Squares	7 x 7" (18 x 18 cm) then cut each of in half on the diagonal
C,D,E,J,L,N,P,V,W,X:	1 Square	7 x 7" (18 x 18 cm) then cut each of in half on the diagonal
Fabric I:	2 Squares	7 x 7" (18 x 18 cm) then cut each of in half on the diagonal
Fabric K,G:	3 Squares	7 x 7" (18 x 18 cm) then cut each of in half on the diagonal
Fabric H,O:	4 Squares	7 x 7" (18 x 18 cm) then cut each of in half on the diagonal
Fabric F,R,S:	5 Squares	7 x 7" (18 x 18 cm) then cut each of in half on the diagonal

Cutting to be continued page 3



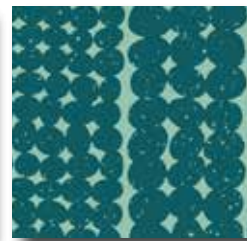
A 4509-900
7/8 yard



B 4516-905
7/8 yard



C 4500-604
1/4 yard *



D 4500-605
1/4 yard *



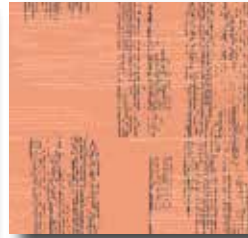
E 4500-606
1/4 yard *



F 4500-608
1/4 yard



G 4500-609
1/4 yard **



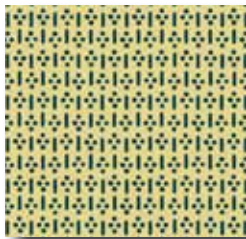
H 4500-612
1/4 yard **



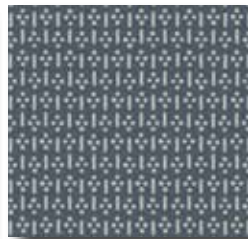
I 4500-614
1/4 yard *



J 4500-615
1/4 yard *



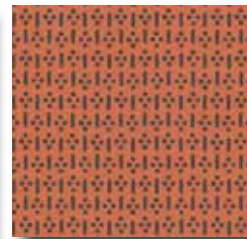
K 4500-616
1/4 yard **



L 4500-617
1/4 yard *



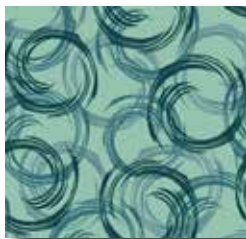
M 4500-618
1/2 yard



N 4500-619
1/4 yard *



O 4500-621
1/4 yard **



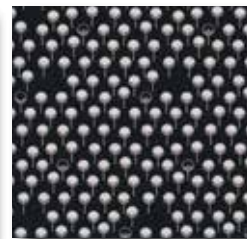
P 4500-622
1/4 yard *



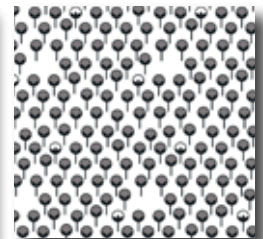
Q 4500-623
1/2 yard



R 4500-624
1/4 yard



S 4500-627
1/4 yard



T 4500-628
1/2 yard



V 4500-633
1/4 yard *



W 4500-634
1/4 yard *



X 4500-635
1/4 yard *



Binding
4500-608
3/4 yard



Backing
2758-063
1 3/4 yard

* 1/4 yard or fat eight

** 1/4 yard or fat quarter

(7/8 yard = 80 cm, 1/4 yard = 25 cm, 1/2 yard = 50 cm, 3/4 yard = 70 cm, 1 3/4" = 1,6 m)

CUTTING:

Fabric M:	7 Squares	7 x 7" (18 x 18 cm) then cut each of in half on the diagonal
Fabric Q,T:	10 Squares	7 x 7" (18 x 18 cm) then cut each of in half on the diagonal
Binding:	7 Strips	3½ x 44" (9 x 112 cm)

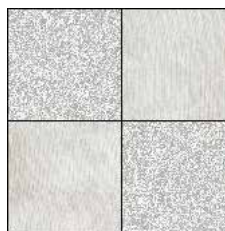
SEWING:

Seam allowance is 1/4" (0,75 cm).

Block 1A: Sew fabric A to fabric B. Make 8.



Block 1B: Sew 2 unit together. Make 2.



For units 2-15B you will be sewing two triangles together to form a half-square triangle. After you sew the triangle unit, press towards the dark fabric. The block will be slightly larger than needed, trim the block so it measures 6 1/2" x 6 1/2" (16,5 x 16,5 cm). Label the blocks with their unit number so that you can easily find them as you assemble the quilt top.

Block 2: Sew fabric H to fabric I. Make 1.

Block 3: Sew fabric I to fabric K. Make 2.

Block 4:: Sew fabric K to fabric O. Make 3.

Block 5: Sew fabric O to fabric A. Make 4.

Block 6: Sew fabric G to fabric M. Make 2.

Block 7: Sew fabric G to fabric H. Make 3.

Block 8A: Sew fabric H to fabric A. Make 3.

Block 8B: Sew fabric H to fabric B. Make 1.

Block 9A: Sew fabric P to fabric A. Make 1.

Block 9B: Sew fabric P to fabric B. Make 1.

Block 10A: Sew fabric F to fabric A. Make 3.

Block 10B: Sew fabric F to fabric B. Make 2.

Block 11A: Sew fabric M to fabric A. Make 2.

Block 11B: Sew fabric M to fabric B. Make 3.

Block 12A Sew fabric R to fabric A. Make 3.

Block 12B: Sew fabric R to fabric B. Make 2.

Block 13A: Sew fabric S to fabric A. Make 2.

Block 13B: Sew fabric S to fabric B. Make 3.

Block 14A: Sew fabric Q to fabric M. Make 5.

Block 14B: Sew fabric Q to fabric F. Make 5.

Block 15A: Sew fabric T to fabric R. Make 5.

Block 15B: Sew fabric T to fabric S. Make 5.

For unit 16-20 you will be sewing two triangles together to form a half-square triangle. After you sew the triangle unit, press towards the dark fabric. The block will be slightly larger than needed, trim the block so it measures 6 1/2" x 6 1/2" (16,5 x 16,5 cm).

You will then take four of these half-square triangle and sew them together to form the unit.

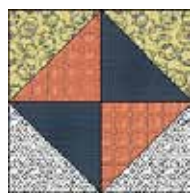
Unit 16: Sew fabric Q to fabric L. Sew fabric Q to fabric W. Sew fabric T to fabric W. And sew fabric T to fabric L. Make 1 of each. Sew these four blocks together to make unit 16.



Unit 17: Sew fabric T to fabric C. Sew fabric T to fabric J. Sew fabric Q to fabric C. And sew fabric Q to fabric J. Make 1 of each. Sew these four blocks together to make unit 17.



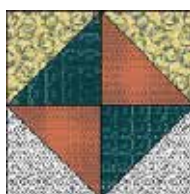
Unit 18: Sew fabric Q to fabric X. Sew fabric Q to fabric M. Sew fabric T to fabric X. And sew fabric T to fabric M. Make 1 of each. Sew these four blocks together to make unit 18.



Unit 19: Sew fabric T to fabric E. Sew fabric T to fabric D. Sew fabric Q to fabric E. And sew fabric Q to fabric D. Make 1 of each. Sew these four blocks together to make unit 19.



Unit 20: Sew fabric Q to fabric V. Sew fabric Q to fabric N. Sew fabric T to fabric V. And sew fabric T to fabric N. Make 1 of each. Sew these four blocks together to make unit 20.



Layer the blocks as sketch on page 5. B is 6 1/2" x 6 1/2" (16,5 x 16,5 cm) square of fabric B, the other numbers refer to the units you created.

Sew 5 columns together according to the following diagram on page 6. Then sew the columns together to complete the quilt top.

QUILTING AND BINDING:

Layer top, batting and backing, which is added a small strip of leftover at one end so the backing size is 63 x 63" (1,6 x 1,6 m), and baste the pieces ➡.

Quilt as you prefer by hand or by machine ➡.

Sew hanging sleeve and place under top binding ➡.

We wish you much success and pleasure with our fabrics and pattern.
Your Team from STOF fabrics.

Sketch



Diagram

