

Q-2059



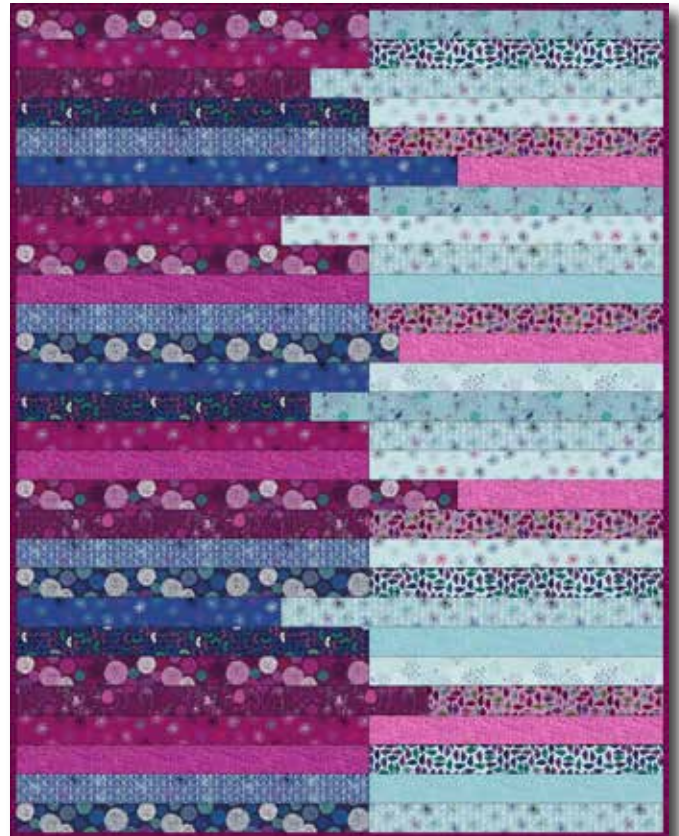
Beginner

Roadside Flowers Quilt

44 X 56" (112 x 142 cm)

FABRIC REQUIREMENT:

Fabrics from series „Roadside Flowers” & „Melange”, both 44” (112 cm) wide and „Sevilla”, 59” (150 cm) wide.



Danish Design 

OTHER SUPPLIES:

Batting: Matilda's Own 99M950, 94” (240 cm) wide 48” (120 cm)

In addition: Matching sewing and quilting thread.

The Basics: Whenever this symbol ➡ appears in the directions, you will find a detailed explanation for ”Sewing Basics” in the website www.stofffabrics.com under Inspiration.

CUTTING ➡:

¼” (0,75 cm) seam allowance is included.

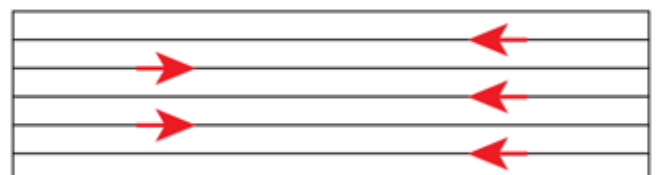
Cut strips in height 2½” (6,5 cm) and in length as mentioned in sketch on page 3.

Fabric A: 5 Strips

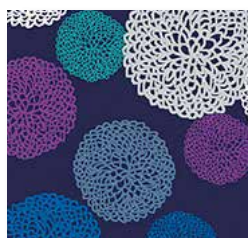
2¾ x 44” (7 x 112 cm) Binding

IMPORTANT:

When sewing more than two strips together, alternate the direction in which you stitch. This prevents stretching the strips into curves.



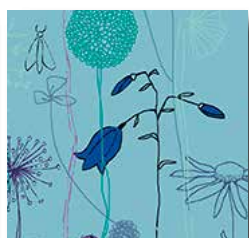
Press seam allowance in one direction.



A 4500-778
10" (25 cm)



B 4500-779
12" (30 cm)



C 4500-781
8" (20 cm)



D 4500-783
12" (30 cm)



E 4500-785
8" (20 cm)



F 4500-786
10" (25 cm)



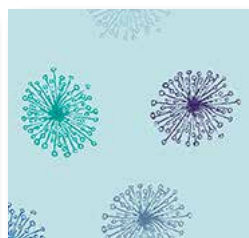
G 4500-787
8" (20 cm)



H 4500-789
12" (30 cm)



I 4500-790
12" (30 cm)



J 4500-793
10" (25 cm)



K 4500-794
8" (20 cm)



L 4500-795
12" (30 cm)



M 4500-797
4" (10 cm)



N 4509-504
8" (20 cm)



O 4509-505
10" (25 cm)



P 4509-701
8" (20 cm)



Q 4509-506
16" (40 cm)



R 2758-014
50" (125 cm)

SEWING OF QUILT TOP: Seam allowance is 1/4" (0,75 cm).

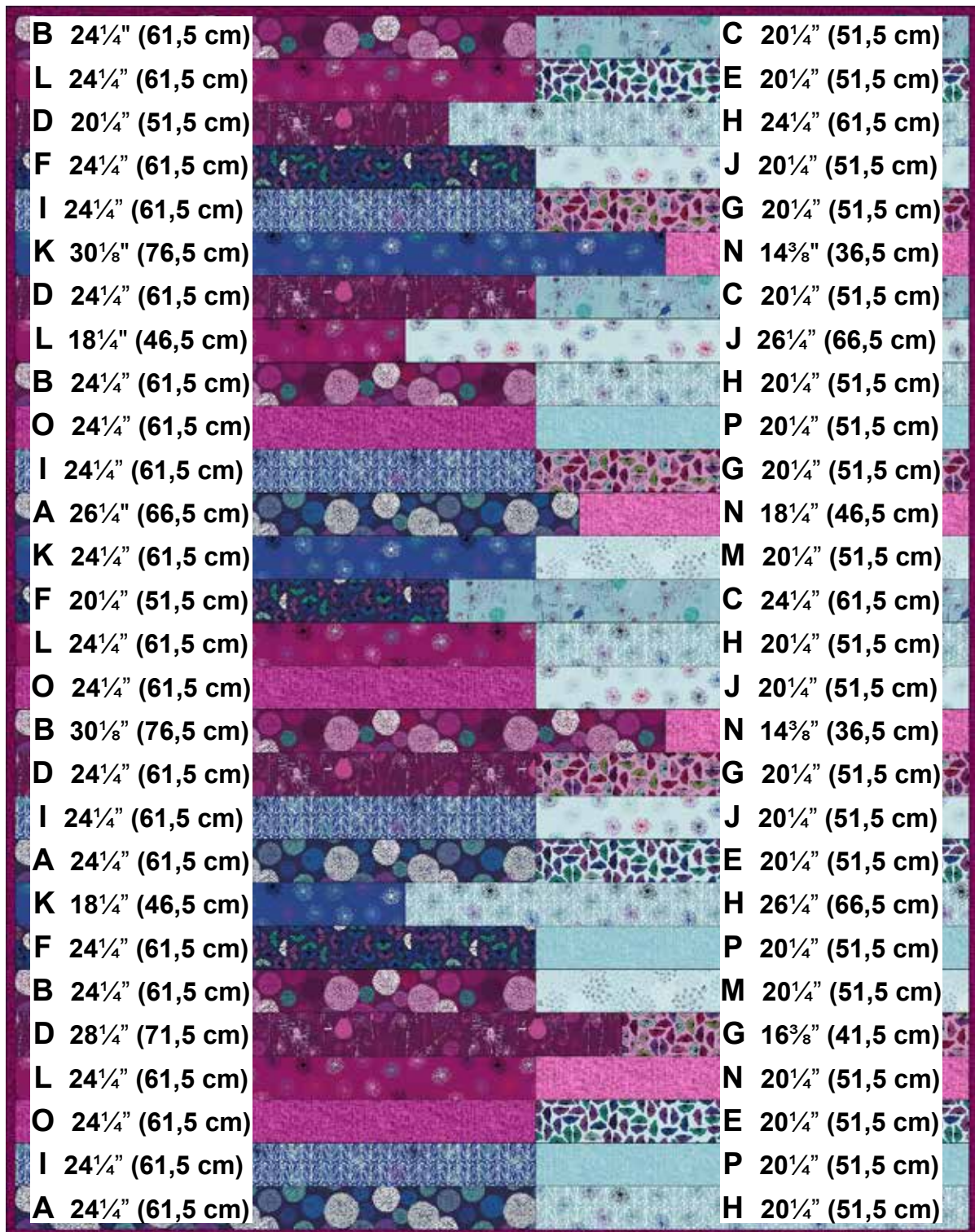
After cutting the strip, place them according to layout on page 3, having a dark fabric at left side and a light fabric at right side. Join each strip-row by joining the strips at the short end. Next join each strip-row. Take care of using different sewing direction as mentioned on page 1.

The quilt top is created when all strip- rows are joined together.

QUILTING AND BINDING:

Layer top, batting and backing in fabric R and baste the pieces. Quilt as you prefer by hand or by machine ↻. Sew hanging sleeve in fabric R and place under top binding in fabric Q ↻.

We wish you much success and pleasure with our fabrics and pattern.
Your Team from stoffabrics.



Note:
 All strips have
 height 2¹/₂" (6,5 cm)

Binding is
 fabric Q