



Q-1974



Intermediate

Spring Meadow Quilt

48 X 59½" (122 x 153 cm)

FABRIC REQUIREMENT:

Fabrics from series „Spring Meadow”, „Melange”, „Dot Mania” & „Quilters Basic Harmony”, all 44" (112 cm) wide and „Sevilla Shots” 59" (150 cm) wide.



OTHER SUPPLIES:

Batting: Matilda's own 99M950 100% Bamboo 94" (2,4 m) wide 52" (130 cm)

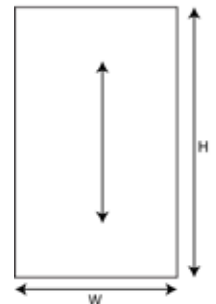
In addition: Matching sewing and quilting thread.

The Basics: Whenever this symbol ➡ appears in the directions, you will find a detailed explanation for "Sewing Basics" in the website www.stofffabrics.com under the Gallery.

CUTTING ➡:

¼" (0,75 cm) seam allowance is included.

Fabric A:	14 Rectangles	9½ x 4¾" (24 x 12 cm)
Fabric B:	17 Rectangles	9½ x 4¾" (24 x 12 cm)
Fabric C & I:	10 Rectangles	9½ x 4¾" (24 x 12 cm)
Fabric D:	9 Rectangles	9½ x 4¾" (24 x 12 cm)
Fabric E:	11 Rectangles	9½ x 4¾" (24 x 12 cm)
Fabric F:	7 Rectangles	9½ x 4¾" (24 x 12 cm)
Fabric G:	12 Rectangles	9½ x 4¾" (24 x 12 cm)
Fabric H:	9 Rectangles	9½ x 4¾" (24 x 12 cm)



Fabric G: 6 Strips 2¾ x 44" (7 x 112 cm) binding



A: 4500-489
22" (55 cm)



B: 4500-492
22" (55 cm)



C: 4500-495
22" (55 cm)



D: 4500-501
12" (30 cm)



E: 4509-403
22" (55 cm)



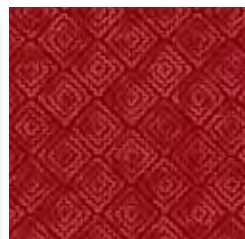
F: 4509-404
12" (30 cm)



G: 4509-405
40" (100 cm)



H: 4512-434
12" (30 cm)



I: 4520-402
22" (55 cm)



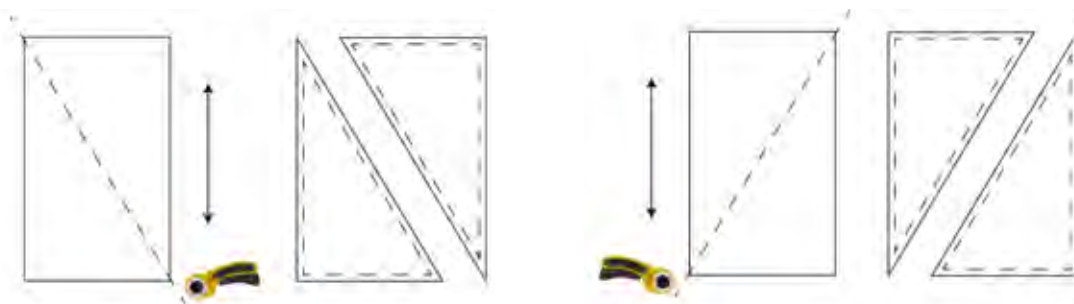
J: 2758-024
65" (165 cm)

CUTTING:

The rectangles must be cut having width $4\frac{3}{4}$ " (12 cm) and height $9\frac{1}{2}$ " (24 cm).

Afterwards the rectangles are cut from one corner to another corner - some from left to right from top and others from right to left from top too. After cutting two triangles come forward, see below sketches.

In below list you'll see how many of each rectangle you need to cut in each fabric:

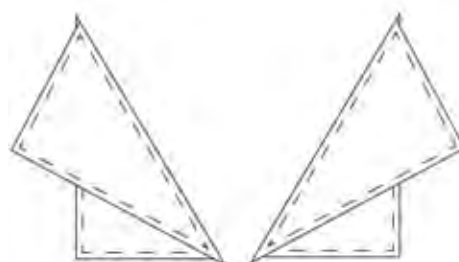


- Fabric A: 7 rectangles (= 14 triangles)
- Fabric B: 8 rectangles (= 16 triangles)
- Fabric C: 5 rectangles (= 10 triangles)
- Fabric D: 5 rectangles (= 10 triangles)
- Fabric E: 7 rectangles (= 14 triangles)
- Fabric F: 2 rectangles (= 4 triangles)
- Fabric G: 6 rectangles (= 12 triangles)
- Fabric H: 5 rectangles (= 10 triangles)
- Fabric I: 4 rectangles (= 8 triangles)

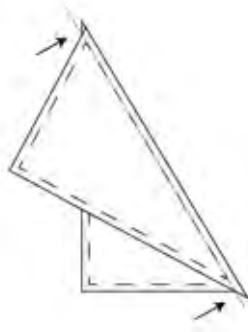
- 7 rectangles (= 14 triangles)
- 9 rectangles (= 18 triangles)
- 5 rectangles (= 10 triangles)
- 4 rectangles (= 8 triangles)
- 4 rectangles (= 8 triangles)
- 5 rectangles (= 10 triangles)
- 6 rectangles (= 12 triangles)
- 5 rectangles (= 10 triangles)
- 6 rectangles (= 12 triangles)

SEWING OF QUILT TOP: See below for allowance.

Take one triangle in light fabric A-D and join together with a triangle in red fabric E-I. Seam allowance is $\frac{1}{4}$ " (0,75 cm). Note there is two ways of placing the triangles upon each other, see sketches.



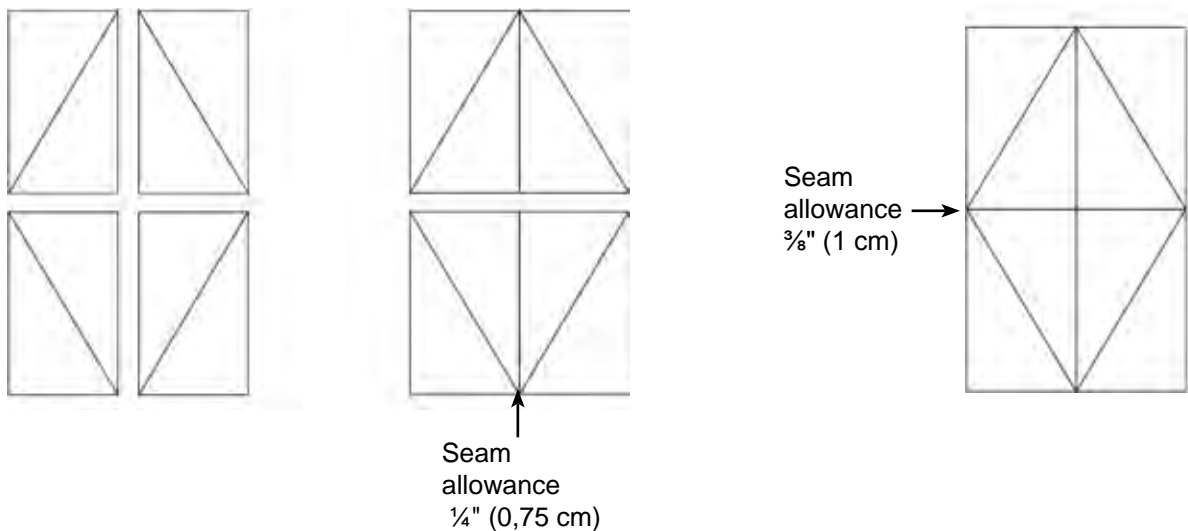
When joining the triangles it's very important to have the correct placement of the triangles at start & at end of seam. The seam must start & stop where the two triangles meet at the seam allowance.



Join all triangles to rectangles according to the layout on page 4.

Position the blocks according to the same layout or as you prefer.

First join the blocks into argyles. When sewing the vertical seam must have seam allowance $\frac{1}{4}$ " (0,75 cm) and when sewing the horizontal seam use seam allowance $\frac{3}{8}$ " (1 cm). To be sure pls. make a test yourselves for having the correct seam allowance both vertically & horizontally. NOTE: this different seam allowance makes sure that the argyle is correct when joining all argyles together.



Next join the blocks with argyles having a seam allowance $\frac{1}{4}$ " (0,75 cm) at both vertical & horizontal seams. To be sure pls. make a test yourselves.

Now the quilt top is created.

QUILTING AND BINDING:

Layer top, batting and backing in fabric J and baste the pieces.

Quilt as you prefer by hand or by machine ➡.

Sew hanging sleeve in fabric J and place under top binding in fabric G ➡.

We wish you much success and pleasure with our fabrics and pattern.
Your Team from STOF fabrics.

