



HOFFMAN FABRICS
EST.1924

A CAMPING WE WILL GO

INTERMEDIATE | 1 FULL DAY CLASS

Finished Quilt: 53" x 61"

WARM COLORWAY



P4338 193-Desert



P4339 80-Taupe



P4340 269-Caterpillar



P4341 16-Sky



P4341 126-Birch



P4342 264-Flamingo



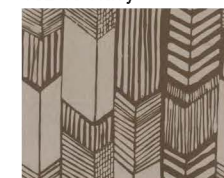
1895 19-Navy



100 302-Stone



102 19-Navy



104 426-Oregano



112 92-Slate

Quilt design by Larene Smith of A Quilted Button, featuring fabrics from the Desert Dawn collection by Hailey Hoffman. All the excitement and the joy of a sleep over is captured in this youthful quilt that still has a touch of sophistication.

Free pattern available at hoffmanfabrics.com



A CAMPING WE WILL GO

Quilt design by Larene Smith
53" x 61"

Yardage Chart

WARM COLORWAY

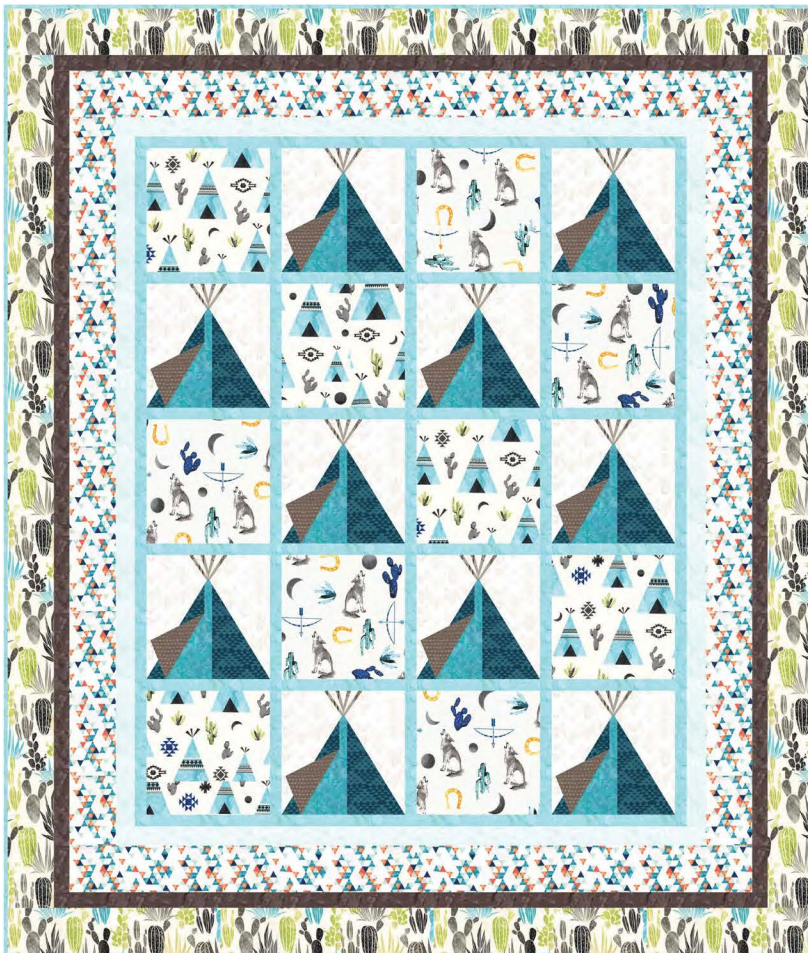
FABRIC	
A: P4338 193-Desert	1/2 yard
B: 1895 19-Navy	3/8 yard
C: P4342 264-Flamingo	1 3/8 yards
D: P4341 126-Birch	3/8 yard
E: 100 302-Stone	1 yard*
F: P4339 80-Taupe	1/2 yard
G: 102 19-Navy	1/2 yard
H: P4340 269-Caterpillar	1 5/8 yards
I: P4341 16-Sky	3/4 yard
J: 104 426-Oregano	1/2 yard
K: 112 92-Slate	1/2 yard

COOL COLORWAY

FABRIC	
A: P4338 454-Dune	1/2 yard
B: 1895 305-Gravel	3/8 yard
C: P4342 457-Oasis	1 3/8 yards
D: 1895 504-Montego	3/8 yard
E: 1895 579-Augusta	1 yard*
F: P4339 457-Oasis	1/2 yard
G: 1895 560-Tidepool	1/2 yard
H: P4340 58-Earth	1 5/8 yards
I: P4341 126-Birch	3/4 yard
J: 102 302-Stone	1/2 yard
K: 115 133-Pacific	1/2 yard

* Binding included

COOL COLORWAY



P4338 454-Dune



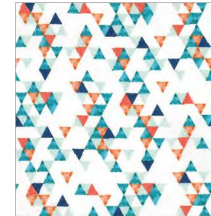
P4339 457-Oasis



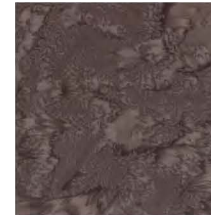
P4340 58-Earth



P4341 126-Birch



P4342 457-Oasis



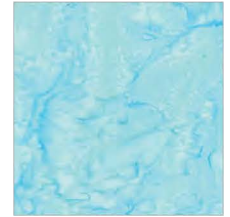
1895 305-Gravel



1895 504-Montego



1895 560-Tidepool



1895 579-Augusta



102 302-Stone



115 133-Pacific

Free pattern available at hoffmanfabrics.com

General Information

All seams are sewn with a $\frac{1}{4}$ " seam allowance.

Pre-wash and press with spray starch before cutting.

WOF = Width of Fabric. LOF = Length of fabric.

Press seams open as much as possible to decrease bulk.

Finished Block is 8" Square – Sashing is $\frac{3}{4}$ ".

There are 5 (FIVE) Borders beginning from the INSIDE towards the OUTSIDE.

Step 1 - Cutting

Fabric A - Cut (2) strips at $8\frac{1}{2}$ " x WOF – Sub-cut into (5) $8\frac{1}{2}$ " squares – Label Block A.

Fabric B – Cut (6) strips at $1\frac{1}{2}$ " x WOF – Sew all the strips together at the $1\frac{1}{2}$ " edge, then sub-cut into (2) $1\frac{1}{2}$ " x $53\frac{1}{2}$ " rectangles (Left and Right Sides) and (2) $1\frac{1}{2}$ " x $46\frac{3}{4}$ " rectangles (Top and Bottom) – BORDER 4.

Fabric C – Cut (2) $3\frac{1}{2}$ " x $47\frac{1}{2}$ " rectangles LOF (lengthwise) ALONG the SELVAGE (Left and Right Sides) and (4) $3\frac{1}{2}$ " strips from the balance from the remaining WIDTH of fabric. Then sew together at the $3\frac{1}{2}$ " edge and sub-cut into (2) $3\frac{1}{2}$ " x $44\frac{3}{4}$ " rectangles (Top and Bottom) – BORDER 3.

Fabric D – Cut (5) strips at $1\frac{3}{4}$ " x WOF – Sub-cut (2) of the $1\frac{3}{4}$ " strips to measure $1\frac{3}{4}$ " x $38\frac{3}{4}$ " (Top and Bottom) – Sew the remaining (3) strips together at the $1\frac{3}{4}$ " edge, then sub-cut into (2) $1\frac{3}{4}$ " x 45" rectangles (Left and Right Sides) – BORDER 2.

Fabric E – Cut as follows:

- a. Cut (4) strips at 1-1/4" x WOF – Sub-cut into (15) 1-1/4" x 8-1/2" rectangles – SASHING BETWEEN BLOCKS – Label Sashing.
- b. Cut (4) strips at 1-1/4" x WOF – Sub-cut into (4) 1-1/4" x 34-3/4" rectangles – SASHING BETWEEN ROWS.
- c. Cut (2) strips at 1-1/4" x WOF – Sub-cut into (2) 1-1/4" x 36-1/4" rectangle (Top and Bottom) – BORDER 1.
- d. Cut (3) strips at 1-1/4" x WOF – Sew all the strips together at the 1-1/4" edge, then sub-cut into (2) 1-1/4" x 43-1/2" rectangles (Left and Right Sides) – BORDER 1.
- e. Cut (6) strips at 2-1/2" for binding.
- f. For balance of the fabric (warm colorway), fuse with DOUBLE SIDED WEB, using **manufacturer's** instructions, to the wrong side and cut (40) 2-1/4" x 1/4" rectangles, as these will be used for the WOOD that is at the TOP of the Tent. For the cool colorway, use any scraps of Stone fabric.

Fabric F – Cut (2) strips at 8-1/2" x WOF – Sub-cut into (5) 8-1/2" squares – Label Block B.

Fabrics G, I, J and K will be cut when preparing the TENT BLOCKS as this will allow for less confusion.

Fabric H – Cut as follows:

- a. Cut (2) strips at 55-1/2" x 3 1/2" LOF (lengthwise) along the SELVAGE EDGE to ensure that the fabric goes in the proper direction.
- b. Cut (4) 3 1/2" strips from the balance of the fabric, as if you were cutting from SELVAGE to SELVAGE. Sew the short ends of the strips together and sub-cut into (2) 56-1/4" x 3 1/2" rectangles (Top and Bottom)

Step 2 – Preparing the Fabric for the Tents

Note: When printing the templates, make sure to select **“actual size”** on your printer to ensure accuracy of templates.

Note: ADD **1/4”** seam allowance all the way around the outer line when cutting the template out of the **“Plastic Mylar”**. Cut all (3) THREE templates and label **“A, B, and C”** as shown at the end of the pattern. Cut (1) additional Template of A and C with 1/2" seam allowance all the way around the outer line as this will make the 3D Flaps on the Tent Blocks – label these A1 and C1.

Using the TEMPLATES cut as follows:

Fabric G – (10) of Template B for the inside of the tent.

Fabric I – Cut as follows for the SKY (background) part of the block –
When cutting the Templates keep in mind the direction of the ARROWS: Note: When cutting the Templates for A and C it is best to cut with a single layer RIGHT SIDE UP.

Cut (3) strips at 7-3/4" x WOF.

- a. Using "Template A", cut (10) pieces (Label "A").
- b. Using the balance of the strips, cut (10) of "Template C" pieces (Label "C").
- c. Cut (2) strips at 2" x WOF – Sub-cut into (10) 2" x 8 1/2" rectangles. Mark the middle at 4-1/4" in from the 2" edge – place and fuse (4) of 2-1/4" x 1/4" rectangles overlapping at the BOTTOM and expanding out towards the top as shown in the "Tent Block" – Make (10) – Label "Top".

For tent flaps - Fabric J (Inside) and K (Outside) - cut (2) strips at 7-3/8" x WOF from each color.

- a. Using "Template A1", align bottom of template to fabric edge. If the point extends, no worries. Cut (10) from each color (Label "A1").
- b. Using "Template C1", cut (10) from each color (Label "C1")

Step 3 – Sewing the Tents

Sew (1) Fabric J "A1" to (1) Fabric K "C1" with RIGHT sides together at the BOTTOM STRAIGHT edge and the ON GRAIN STRAIGHT edge – Do not sew on the ANGLE edge as this will be sewn into the seam – Turn right sides out - Make (10) – RIGHT FLAP.

Sew (1) Fabric J "C1" to (1) Fabric K "A1" exactly as previously done – Make (10) – LEFT FLAP.

Layer the RIGHT and LEFT FLAPS onto (1) Fabric G – pin to secure and trim off any excess of the flaps to be even with Fabric G. Then layer (1) of Fabric I (background sky) “A” RST onto the LEFT side and sew the seam – press towards Fabric I – Make (10).

Layer (1) Fabric I (background sky) “C” onto the RIGHT side and sew the seam – press towards Fabric I – Make (10) – this finishes the tent section at 8 1/2” x 7”.

Sew (1) of Fabric I “TOP” to the top of the tent to finish the tent block at 8-1/2” square – Make (10) – Set aside for use later.

Step 4 – Sewing the Quilt Center – Refer to the COVER PICTURE as a Guide. Sew the ROWS together as follows to measure 34-3/4” x 8 1/2”

- a. Rows 1 and 5: Block A, Sashing, Tent Block, Sashing, Block B, Sashing, Tent Block.
- b. Row 2: Tent Block, Sashing, Block A, Sashing, Tent Block, Sashing, Block B.
- c. Row 3: Block B, Sashing, Tent Block, Sashing, Block A, Sashing, Tent Block.
- d. Row 4: Tent Block, Sashing, Block B, Sashing, Tent Block, Sashing, Block A.

Sew the ROWS together by inserting (1) Fabric E 1-1/4” x 34-3/4” rectangles between each row to finish the center as 34-3/4” x 43-1/2”.

Step 5 – Adding the Borders

Border 1: Sew (1) Fabric E $1\text{-}1/4''$ x $43\text{-}1/2''$ rectangle to the LEFT and RIGHT sides. Then sew (1) $1\text{-}1/4''$ x $36\text{-}1/4''$ rectangle to the TOP and BOTTOM to measure $36\text{-}1/4''$ x $45''$.

Border 2: Sew (1) Fabric D $1\text{-}3/4''$ x $45''$ rectangle to the LEFT and RIGHT sides. Then sew (1) $1\text{-}3/4''$ x $38\text{-}3/4''$ rectangle to the TOP and BOTTOM to measure $38\text{-}3/4''$ x $47\text{-}1/2''$.

Border 3: Sew (1) Fabric C $3\text{-}1/2''$ x $47\text{-}1/2''$ rectangle to the LEFT and RIGHT sides. Then sew (1) $3\text{-}1/2''$ x $44\text{-}3/4''$ rectangle to the TOP and BOTTOM to measure $44\text{-}3/4''$ x $53\text{-}1/2''$.

Border 4: Sew (1) Fabric B $1\text{-}1/2''$ x $53\text{-}1/2''$ rectangle to the LEFT and RIGHT sides. Then sew (1) $1\text{-}1/2''$ x $46\text{-}3/4''$ rectangle to the TOP and BOTTOM to measure $46\text{-}3/4''$ x $55\text{-}1/2''$.

Border 5: Sew (1) Fabric H $3\text{-}1/2''$ x $55\text{-}1/2''$ rectangle to the LEFT and RIGHT sides. Then sew (1) $3\text{-}1/2''$ x $56\text{-}1/4''$ rectangle to the TOP and BOTTOM to finish the quilt top at $53''$ x $61''$ (approximately).

Layer the backing, batting, and quilt top and quilt as desired, keeping the flaps free. Add the binding onto the quilt to finish.

NOTE: WHEN PRINTING, MAKE SURE TO SELECT
"AT ACTUAL SIZE" ON YOUR HOME PRINTER
TO ENSURE ACCURACY OF TEMPLATES.

A



B



C

