

Q-1985



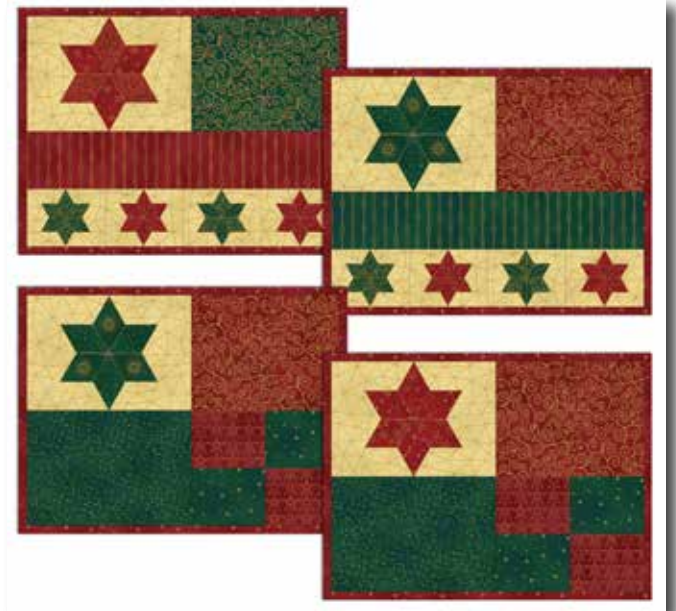
Beginner

## Amazing Stars 4 Placemats

13<sup>3</sup>/<sub>8</sub> x 16<sup>1</sup>/<sub>2</sub>" (34 x 42 cm)

### FABRIC REQUIREMENT:

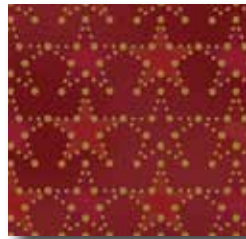
Fabrics from series „Amazing Stars”, 44" (112 cm) wide.



Danish Design 



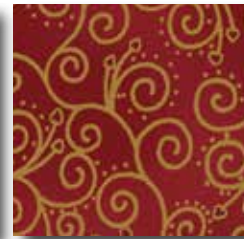
A: 4595-284  
1 panel



B: 4594-407  
6" (15 cm)



C: 4594-410  
6" (15 cm)



D: 4594-416  
8" (20 cm)



E: 4594-419  
18" (45 cm)



F: 4594-806  
6" (15 cm)



G: 4594-808  
8" (20 cm)



H: 4594-810  
6" (15 cm)



I: 4594-813  
8" (20 cm)

CUTTING: Seam allowance is 1/4" (0,75 cm).

Fabric A:	4 rectangles	7 x 8 <sup>1</sup> / <sub>2</sub> " (17,5 x 21,5 cm) around big star *
Fabric D:	3 squares	7 x 8 <sup>1</sup> / <sub>2</sub> " (17,5 x 21,5 cm)
Fabric G:	1 square	7 x 8 <sup>1</sup> / <sub>2</sub> " (17,5 x 21,5 cm)
Fabric I:	2 squares	7 x 8 <sup>1</sup> / <sub>2</sub> " (17,5 x 21,5 cm)
Fabric C & F:	1 strip	3 <sup>3</sup> / <sub>4</sub> x 16 <sup>1</sup> / <sub>2</sub> " (9,5 x 42 cm)
Fabric A:	8 rectangles	3 <sup>3</sup> / <sub>4</sub> x 4 <sup>1</sup> / <sub>2</sub> " (9,5 x 11,5 cm) around small stars *
Fabric B & H:	8 rectangles	3 <sup>3</sup> / <sub>4</sub> x 4 <sup>1</sup> / <sub>2</sub> " (9,5 x 11,5 cm)
Backing	4 rectangles	13 <sup>3</sup> / <sub>8</sub> x 16 <sup>1</sup> / <sub>2</sub> " (34 x 42 cm)
Batting	4 squares	matching placemat
Fabric E:	6 strips	2 <sup>3</sup> / <sub>4</sub> x 44" (7 x 112 cm) binding

## CUTTING OF PANEL:

\* Cut the requested rectangles 7 x 8½" (17,5 x 21,5 cm) around the big stars on left side of the panel & cut the small rectangles 3¾ x 4½" (9,5 x 11,5 cm) around the small stars on right side of the panel. See page 3.

SEWING OF PLACEMAT: Seam allowance is ¼" (0,75 cm).

Join the rectangles for the top of the placemats according to sketches on page 4.

NOTE: there are four different placemats.

## QUILTING AND BINDING:

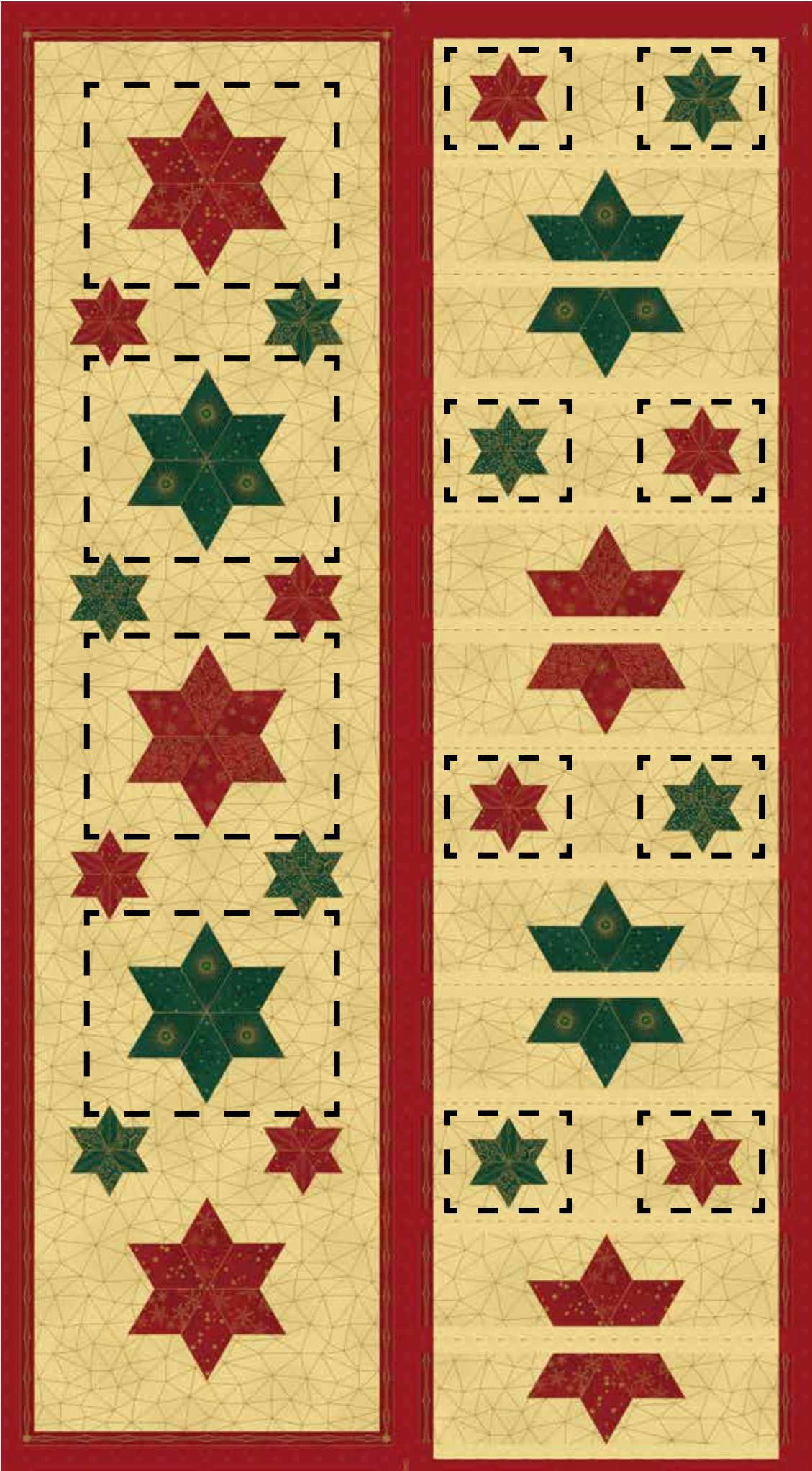
Layer top, batting and backing and baste the pieces.

Quilt as you prefer by hand or by machine ➡.

Sew top binding in fabric E ➡.

We wish you much success and pleasure with our fabrics and pattern.  
Your Team from STOF fabrics.

Rectangle around big star  
7 x 8½" (17,5 x 21,5 cm)



Rectangle around small star  
3¾ x 4½" (9,5 x 11,5 cm)

