

Q-2082



Beginner

Christmas Wonders Placemats

17¼ X 12½" (44 x 32 cm)

FABRIC REQUIREMENT:

Fabrics from series „Christmas Wonders”, 44” (112 cm) wide.


Danish Design 



OTHER SUPPLIES:

Batting: Matilda's Own 99M400, 94" (240 cm) wide 16" (40 cm)

In addition: Matching sewing and quilting thread.

The Basics: Whenever this symbol  appears in the directions, you will find a detailed explanation for "Sewing Basics" in the website www.stofffabrics.com under Inspiration.

CUTTING :

¼" (0,75 cm) seam allowance is included.

Fabric A:	2 Rectangles	11½ x 12½" (29 x 32 cm)
Fabric B,D,E,F:	3 Squares	3 x 3" (7,5 x 7,5 cm)
Fabric C,G:	4 Squares	3 x 3" (7,5 x 7,5 cm)
Fabric I-M:	2 Rectangles	6 x 2¾" (15 x 7 cm)
Fabric H:	2 Strips	12½ x 1½" (32 x 4 cm)
Fabric H:	3 Strips	2¾ x 44" (7 x 112 cm) Binding
Fabric H:	2 Rectangles	20 X 16" (50 x 40 cm) Backside



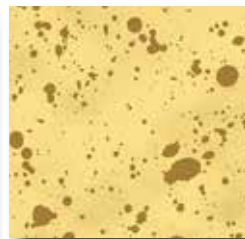
A 4596-203
16" (40 cm)



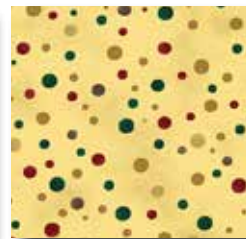
B 4596-206
6" (15 cm)



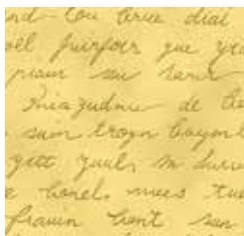
C 4596-207
6" (15 cm)



D 4596-210
6" (15 cm)



E 4596-211
6" (15 cm)



F 4596-212
6" (15 cm)



G 4596-213
16" (40 cm)



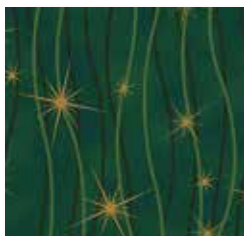
H 4596-407
12" (30 cm)



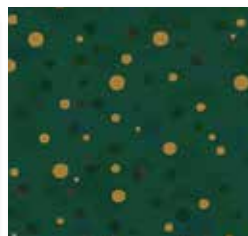
I 4596-800
6" (15 cm)



J 4596-804
6" (15 cm)



K 4596-806
6" (15 cm)



L 4596-807
6" (15 cm)

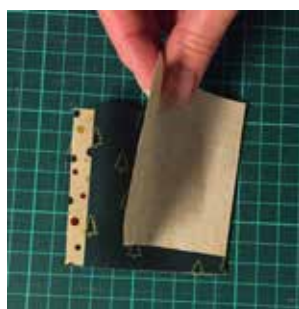


M 4596-809
6" (15 cm)

SEWING OF QUILT TOP: Seam allowance is 1/4" (0,75 cm).

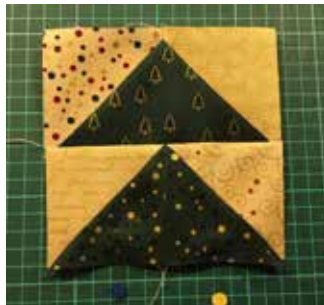
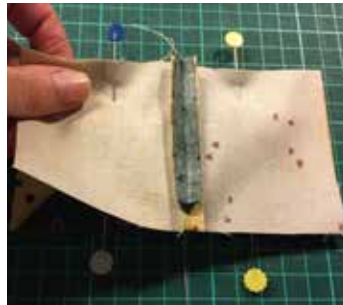
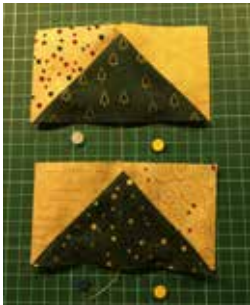
Start joining the block with small trees for the left side of the placemats.
Take two squares in beige fabrics and one rectangle in green fabric. See layout for fabrics on page 4.

Follow below photos when joining the pieces together.





Now join another tree the same way. Join the trees as below photos.
For each placemat, join five trees.



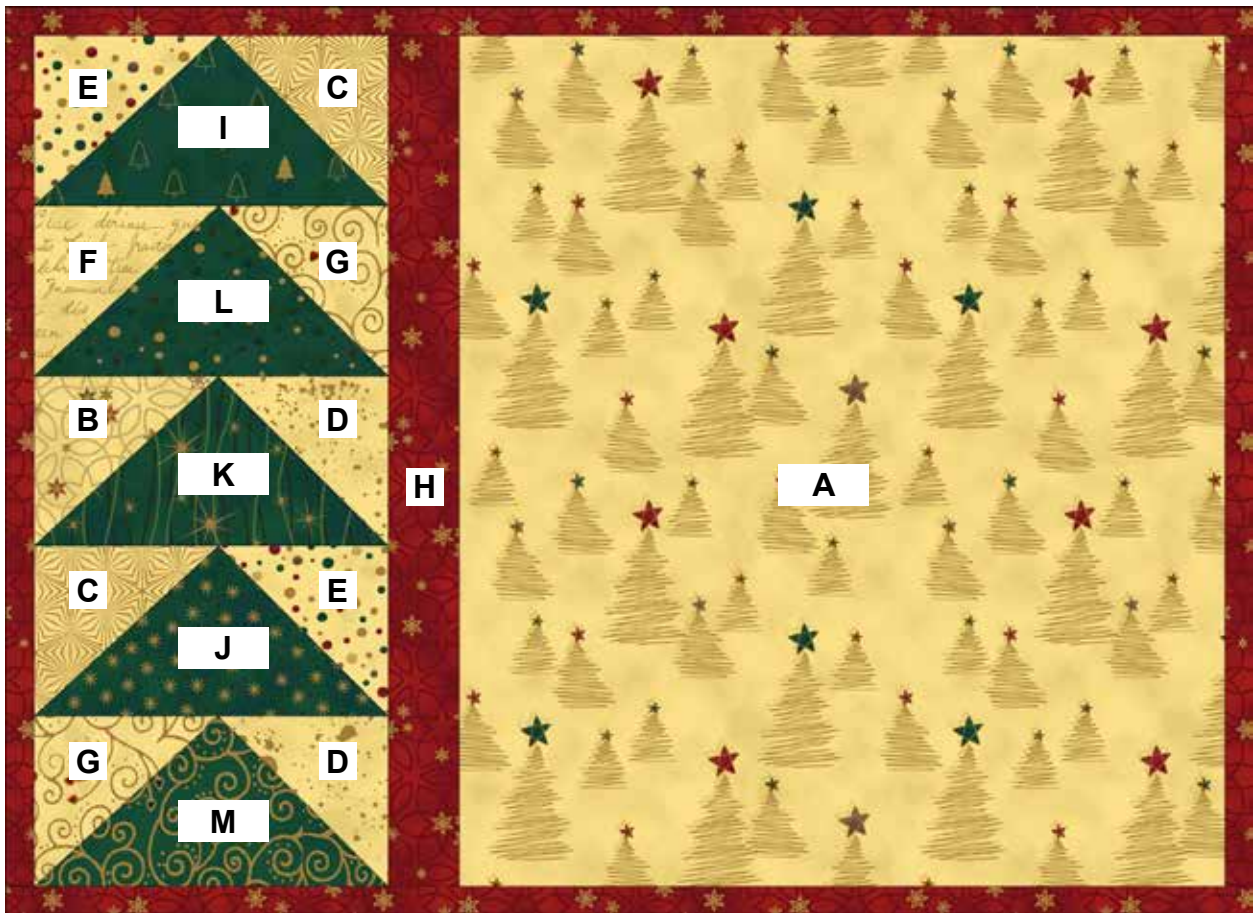
Trim the sides of the block with the five trees. On right side join the strip in fabric H. And next join the big rectangle in fabric A. Also see layout on page 4.

QUILTING AND BINDING:

Layer top, batting and backing in fabric G and baste the pieces.
Quilt as you prefer by hand or by machine ➡.

Sew top binding in fabric H ➡.

We wish you much success and pleasure with our fabrics and pattern.
Your Team from stoffabrics.



Binding is fabric H

