

Q-2006



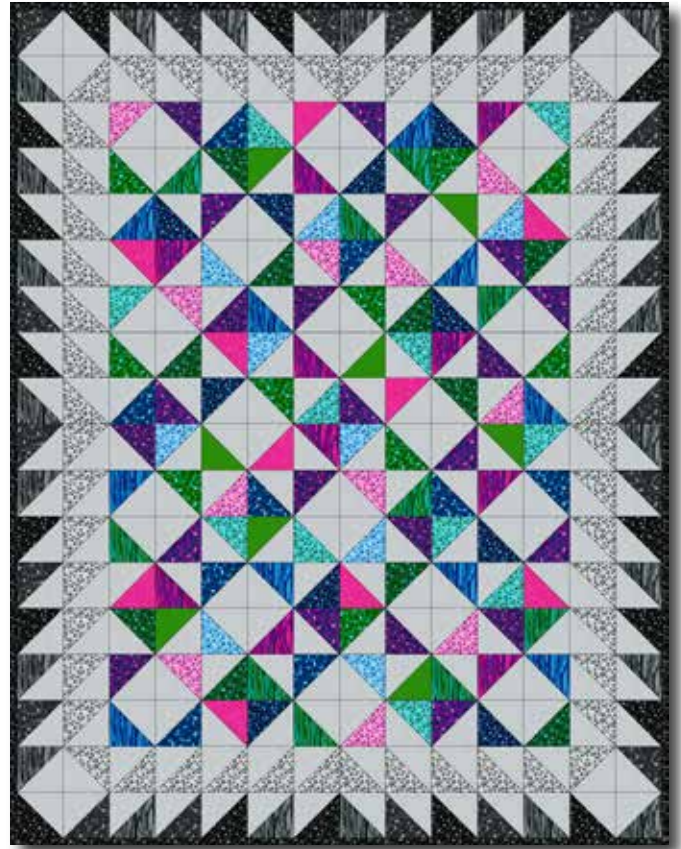
Intermediate

Rainbow Colours Quilt

56 X 71½" (142 x 182 cm)

FABRIC REQUIREMENT:

Fabrics from series „Rainbow Colours”, „Brighton”, both 44" (112 cm) wide and „Sevilla Shots”, 59" (150 cm) wide.



OTHER SUPPLIES:

Batting: Matilda's Own 99M100, 94" (240 cm) wide 61" (155 cm)

In addition: Matching sewing and quilting thread.

The Basics: Whenever this symbol ➡ appears in the directions, you will find a detailed explanation for "Sewing Basics" in the website www.stofffabrics.com under Inspiration.

CUTTING ➡:

¼" (0,75 cm) seam allowance is included.

Fabric A:	126 Squares	5 x 5" (12,5 x 12,5 cm)
Fabric B-O:	5 Squares	5 x 5" (12,5 x 12,5 cm)
Fabric P:	26 Squares	5 x 5" (12,5 x 12,5 cm)
Fabric Q:	10 Squares	5 x 5" (12,5 x 12,5 cm)
Fabric R:	9 Squares	5 x 5" (12,5 x 12,5 cm)
Fabric S:	11 Squares	5 x 5" (12,5 x 12,5 cm)
Fabric T:	1 Rectangle	59 x 79" (150 x 200 cm) Backing
Fabric Q:	6 Strips	2¾ x 44" (7 x 112 cm) Binding



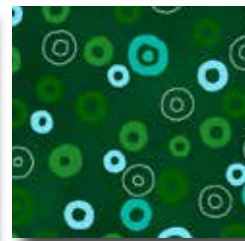
A 4511-148
87" (2,2 m)



B 4500-584
6" (15 cm)



C 4500-585
6" (15 cm)



D 4500-586
6" (15 cm)



E 4500-587
6" (15 cm)



F 4500-590
6" (15 cm)



G 4500-591
6" (15 cm)



H 4500-594
6" (15 cm)



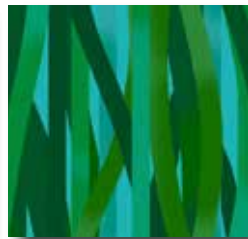
I 4500-595
6" (15 cm)



J 4500-597
6" (15 cm)



K 4500-599
6" (15 cm)



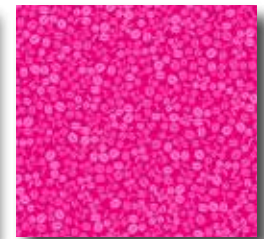
L 4500-600
6" (15 cm)



M 4500-602
6" (15 cm)



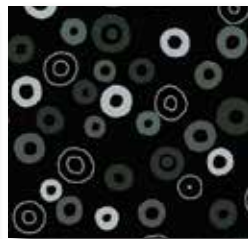
N 4511-119
6" (15 cm)



O 4511-144
6" (15 cm)



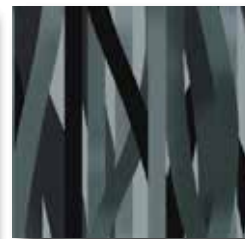
P 4500-592
12" (30 cm)



Q 4500-593
30" (75 cm)



R 4500-598
12" (30 cm)



S 4500-603
12" (30 cm)



T 2758-028
79" (2 m)

SEWING OF QUILT TOP: Seam allowance is 1/4" (0,75 cm).

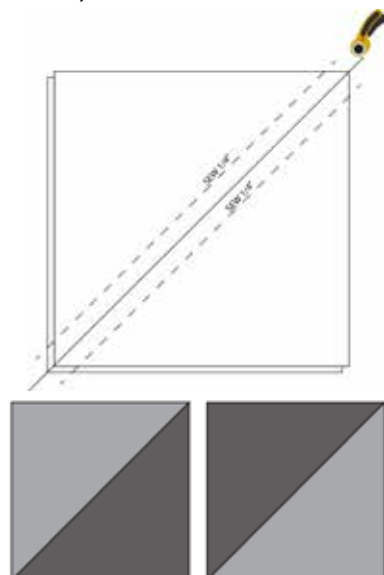
On squares in fabric A draw a diagonal line from corner to corner.

Take one square in fabric A and one square in fabric B and position upon each other with right sides together.

Join this square by sewing on each side of the drawn line & afterwards cut at drawn line, see sketch.

Two squares appear, see sketch. Iron seam towards dark fabric.

Join squares like this having fabric A with fabric B-S.



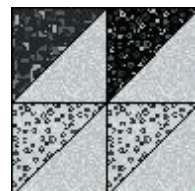
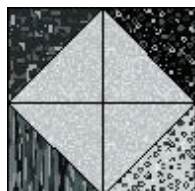
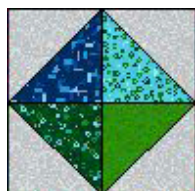
Below is a list of how many squares in each colour combination:

Fabric A+B: 5 squares
Fabric A+E: 5 squares
Fabric A+H: 5 squares
Fabric A+K: 5 squares
Fabric A+N: 5 squares
Fabric A+Q: 10 squares

Fabric A+C: 5 squares
Fabric A+F: 5 squares
Fabric A+I: 5 squares
Fabric A+L: 5 squares
Fabric A+O: 5 squares
Fabric A+R: 9 squares

Fabric A+D: 5 squares
Fabric A+G: 5 squares
Fabric A+J: 5 squares
Fabric A+M: 5 squares
Fabric A+P: 26 squares
Fabric A+S: 11 squares

Position the squares according to layout on page 4 or as you prefer.
Start joining blocks as below sketches:



Total:
18 bloks

Total:
17 blocks

Total:
4 blocks

Total:
10 blocks

Total:
4 blocks

Total:
10 blocks

Again position the blocks according to layout on page 4.
Then join the blocks into rows. Next join the rows into the quilt piece.

The quilt top is now created.

QUILTING AND BINDING:

Layer top, batting and backing in fabric T and baste the pieces.

Quilt as you prefer by hand or by machine ➡.

Sew hanging sleeve in fabric T and place under top binding in fabric Q ➡.

We wish you much success and pleasure with our fabrics and pattern.
Your Team from STOF fabrics.

