

Q-2014



Beginner

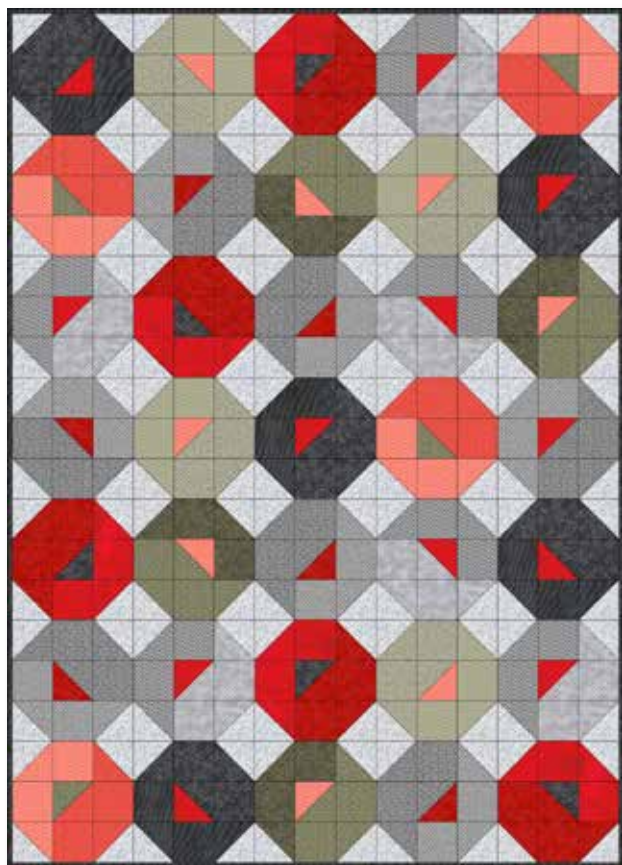
Gradiente Quilt

48 X 67" (122 x 170 cm)

FABRIC REQUIREMENT:

Fabrics from series „Gradiente” and „Quilters Shadow”, both 44" (112 cm) wide.

Danish Design 



OTHER SUPPLIES:

Batting: Matilda's Own 99M300, 94" (240 cm) wide 54" (135 cm)

In addition: Matching sewing and quilting thread.

The Basics: Whenever this symbol  appears in the directions, you will find a detailed explanation for "Sewing Basics" in the website www.stofffabrics.com under Inspiration.

CUTTING :

¼" (0,75 cm) seam allowance is included.

Fabric A:	70 Squares	4¼ x 4¼" (10,5 x 10,5 cm)
Fabric B:	10 Squares	4¼ x 4¼" (10,5 x 10,5 cm)
Fabric D, H, I, L:	4 Squares	4¼ x 4¼" (10,5 x 10,5 cm)
Fabric E, G:	7 Squares	4¼ x 4¼" (10,5 x 10,5 cm)
Fabric F, K:	8 Squares	4¼ x 4¼" (10,5 x 10,5 cm)
Fabric J:	6 Squares	4¼ x 4¼" (10,5 x 10,5 cm)
Fabric M:	9 Squares	4¼ x 4¼" (10,5 x 10,5 cm)
Fabric C, N:	11 Squares	4¼ x 4¼" (10,5 x 10,5 cm)
Fabric O:	5 Squares	4¼ x 4¼" (10,5 x 10,5 cm)
Fabric B, C, N, O:	10 Squares	3¾ x 3¾" (9,5 x 9,5 cm)
Fabric D, F, H, I, K, L:	8 Squares	3¾ x 3¾" (9,5 x 9,5 cm)
Fabric E, G:	14 Squares	3¾ x 3¾" (9,5 x 9,5 cm)
Fabric J, M:	12 Squares	3¾ x 3¾" (9,5 x 9,5 cm)

Fabric O: 6 Strips 2¾ x 44" (7 x 112 cm) Binding



A 4512-560
34" (85 cm)



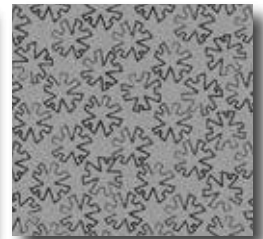
B 4512-515
10" (25 cm)



C 4512-516
10" (25 cm)



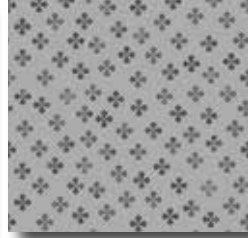
D 4512-523
10" (25 cm)



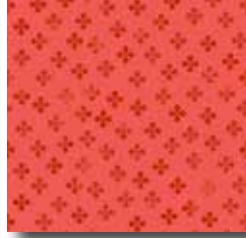
E 4512-524
16" (40 cm)



F 4512-532
10" (25 cm)



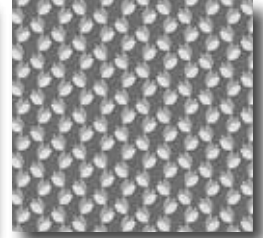
G 4512-533
16" (40 cm)



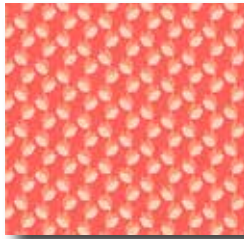
H 4512-534
10" (25 cm)



I 4512-541
10" (25 cm)



J 4512-542
10" (25 cm)



K 4512-543
10" (25 cm)



L 4512-550
10" (25 cm)



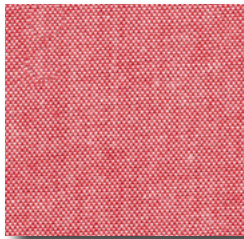
M 4512-551
10" (25 cm)



N 4516-415
16" (40 cm)



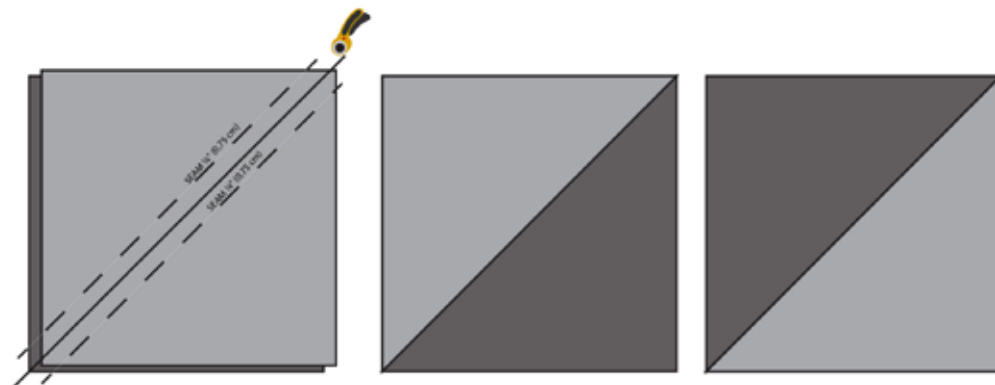
O 4516-904
10" (25 cm)



P 2758-024
71" (180 cm)

SEWING OF QUILT TOP: Seam allowance is 1/4" (0,75 cm).

Start drawing a diagonal line on back side of all squares in fabric A. Then take one square in fabric A and one square in fabric B 4 1/4 x 4 1/4" (10,5 x 10,5 cm). With right sides together sew on both sides of the drawn line. Cut on the drawn line and 2 half triangle squares come forward, see sketch.



Having these half triangle squares and squares join block like below:

B = square 9,5 x 9,5 cm

O = square 9,5 x 9,5 cm

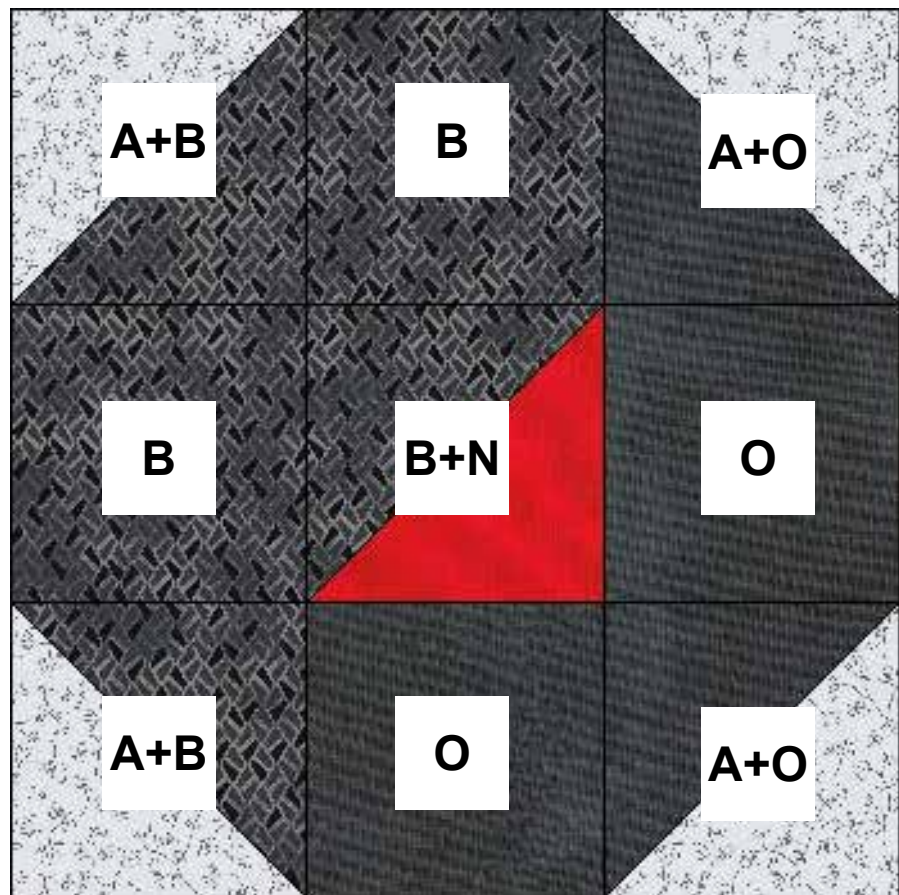
A+B = half triangle square made from two squares 10,5 x 10,5 cm

A+O = half triangle square made from two squares 10,5 x 10,5 cm

B+N = half triangle square made from two squares 10,5 x 10,5 cm

Note: only one of the squares are used in the block. The other one is used in the next block.

(The letter is the number of the fabric).



Block 1:

Square 9,5 x 9,5 cm: fabric B & O - 2 pcs

Half triangle square: fabric A & B - 1 pcs (= 2 squares)

Half triangle square: fabric A & O - 1 pcs (= 2 squares)

Half triangle square: fabric B & N - 1 pcs (use only 1 square)

Make 5 blocks.



Block 2:

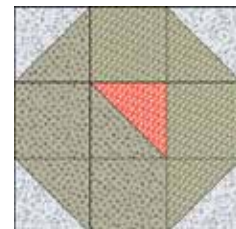
Square 9,5 x 9,5 cm: fabric I & L - 2 pcs

Half triangle square: fabric A & I - 1 pcs (= 2 squares)

Half triangle square: fabric A & L - 1 pcs (= 2 squares)

Half triangle square: fabric I & K - 1 pcs (use only 1 square)

Make 4 blocks.



Block 3:

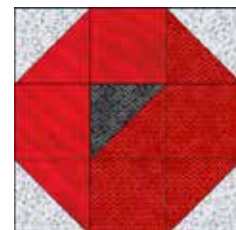
Square 9,5 x 9,5 cm: fabric C & N - 2 pcs

Half triangle square: fabric A & C - 1 pcs (= 2 squares)

Half triangle square: fabric A & N - 1 pcs (= 2 squares)

Half triangle square: fabric C & B - 1 pcs (use only 1 square)

Make 5 blocks.



Block 4:

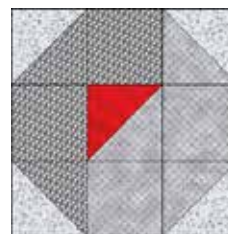
Square 9,5 x 9,5 cm: fabric J & m - 2 pcs

Half triangle square: fabric A & J - 1 pcs (= 2 squares)

Half triangle square: fabric A & M - 1 pcs (= 2 squares)

Half triangle square: fabric M & N - 1 pcs (use only 1 square)

Make 6 blocks.



Block 5:

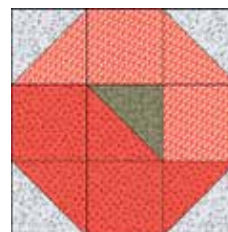
Square 9,5 x 9,5 cm: fabric H & K - 2 pcs

Half triangle square: fabric A & H - 1 pcs (= 2 squares)

Half triangle square: fabric A & K - 1 pcs (= 2 squares)

Half triangle square: fabric H & F - 1 pcs (use only 1 square)

Make 4 blocks.



Block 6:

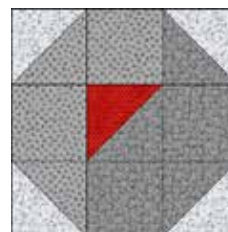
Square 9,5 x 9,5 cm: fabric E & G - 2 pcs

Half triangle square: fabric A & E - 1 pcs (= 2 squares)

Half triangle square: fabric A & G - 1 pcs (= 2 squares)

Half triangle square: fabric E & C - 1 pcs (use only 1 square)

Make 7 blocks.



Block 7:

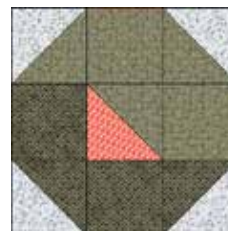
Square 9,5 x 9,5 cm: fabric D & F - 2 pcs

Half triangle square: fabric A & D - 1 pcs (= 2 squares)

Half triangle square: fabric A & F - 1 pcs (= 2 squares)

Half triangle square: fabric F & K - 1 pcs (use only 1 square)

Make 4 blocks.



Position the blocks according to layout on page 5. Note that the blocks are not turned the same way.

First join the blocks vertically, then horizontally.

QUILTING AND BINDING:

Layer top, batting and backing in fabric P and baste the pieces.

Quilt as you prefer by hand or by machine ➡.

Sew hanging sleeve in fabric P and place under top binding in fabric O ➡.

We wish you much success and pleasure with our fabrics and pattern.
Your Team from STOF fabrics.

