

**Q-2015**



Beginner

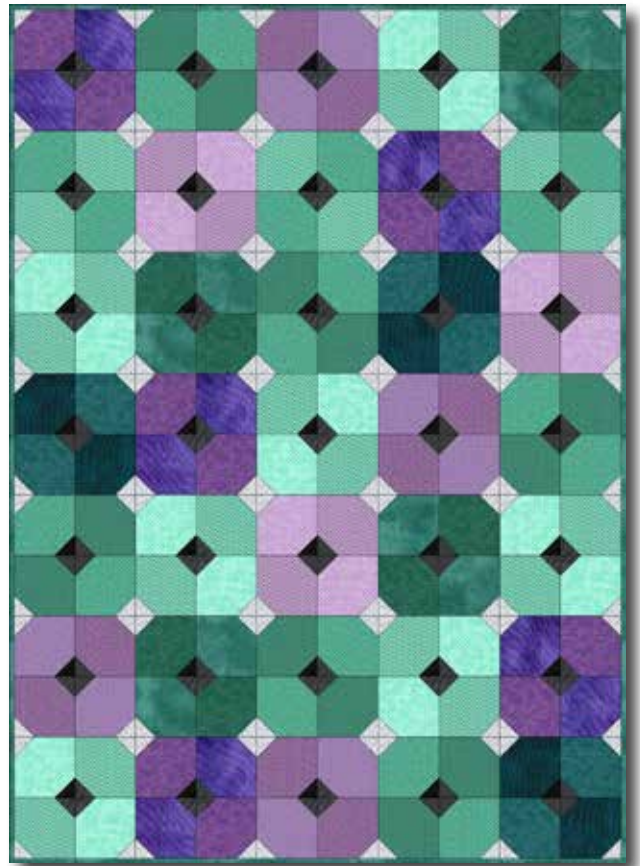
## Gradiente Quilt

48 X 67" (122 x 170 cm)

### FABRIC REQUIREMENT:

Fabrics from series „Gradiente” and „Quilters Shadow”, both 44" (112 cm) wide.


Danish Design 



### OTHER SUPPLIES:

Batting: Matilda's Own 99M300, 94" (240 cm) wide 54" (135 cm)

In addition: Matching sewing and quilting thread.

The Basics: Whenever this symbol  appears in the directions, you will find a detailed explanation for "Sewing Basics" in the website [www.stofffabrics.com](http://www.stofffabrics.com) under Inspiration.

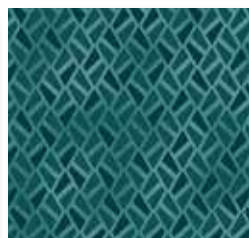
### CUTTING :

¼" (0,75 cm) seam allowance is included.

Fabric B,H,J,N:	6 Squares	5 <sup>3</sup> / <sub>8</sub> x 5 <sup>3</sup> / <sub>8</sub> " (13,5 x 13,5 cm)
Fabric C,D,F,O:	8 Squares	5 <sup>3</sup> / <sub>8</sub> x 5 <sup>3</sup> / <sub>8</sub> " (13,5 x 13,5 cm)
Fabric A,M:	10 Squares	5 <sup>3</sup> / <sub>8</sub> x 5 <sup>3</sup> / <sub>8</sub> " (13,5 x 13,5 cm)
Fabric E:	12 Squares	5 <sup>3</sup> / <sub>8</sub> x 5 <sup>3</sup> / <sub>8</sub> " (13,5 x 13,5 cm)
Fabric K:	14 Squares	5 <sup>3</sup> / <sub>8</sub> x 5 <sup>3</sup> / <sub>8</sub> " (13,5 x 13,5 cm)
Fabric G:	18 Squares	5 <sup>3</sup> / <sub>8</sub> x 5 <sup>3</sup> / <sub>8</sub> " (13,5 x 13,5 cm)
Fabric I:	20 Squares	5 <sup>3</sup> / <sub>8</sub> x 5 <sup>3</sup> / <sub>8</sub> " (13,5 x 13,5 cm)
Fabric L:	140 Squares	2 <sup>1</sup> / <sub>4</sub> x 2 <sup>1</sup> / <sub>4</sub> " (5,5 x 5,5 cm)
Fabric Q:	105 Squares	2 <sup>1</sup> / <sub>4</sub> x 2 <sup>1</sup> / <sub>4</sub> " (5,5 x 5,5 cm)
Fabric P:	35 Squares	2 <sup>1</sup> / <sub>4</sub> x 2 <sup>1</sup> / <sub>4</sub> " (5,5 x 5,5 cm)
Fabric O:	6 Strips	2 <sup>3</sup> / <sub>4</sub> x 44" (7 x 112 cm) Binding



A 4512-519  
14" (35 cm)



B 4512-520  
8" (20 cm)



C 4512-521  
8" (20 cm)



D 4512-528  
8" (20 cm)



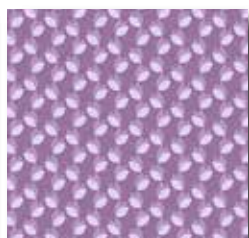
E 4512-530  
14" (35 cm)



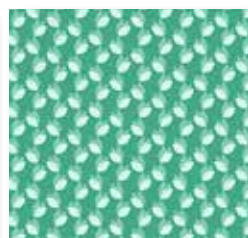
F 4512-537  
8" (20 cm)



G 4512-539  
20" (50 cm)



H 4512-546  
8" (20 cm)



I 4512-548  
20" (50 cm)



J 4512-555  
8" (20 cm)



K 4512-557  
14" (35 cm)



L 4512-560  
22" (55 cm)



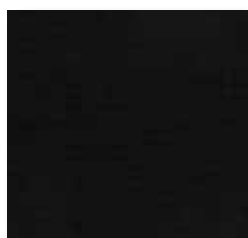
M 4516-503  
14" (35 cm)



N 4516-703  
8" (20 cm)



O 4516-707  
28" (70 cm)



P 4516-903  
8" (20 cm)



Q 4516-904  
18" (45 cm)



R 2758-005  
71" (180 cm)

SEWING OF QUILT TOP: Seam allowance is 1/4" (0,75 cm).

Start joining block A-H.

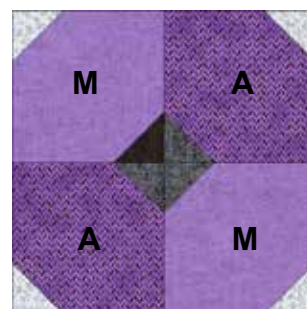
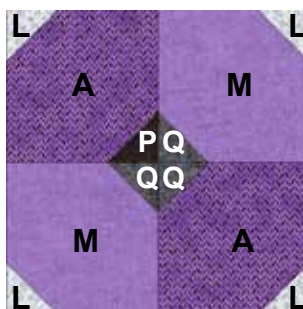
For block A: take two big squares in  $5\frac{3}{8} \times 5\frac{3}{8}$ " (13,5 x 13,5 cm) in each fabric A & M.

Also take four small squares in  $2\frac{1}{4} \times 2\frac{1}{4}$ " (5,5 x 5,5 cm) in fabric L. Take one small square same size in fabric P & three small squares in fabric Q.

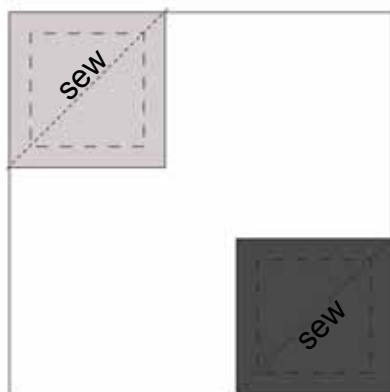
Now with right sides together join the small squares to two of the corners on the big squares, following the sketches on next page.

Note that the big squares are not placed the same way so take care when joining the small squares.

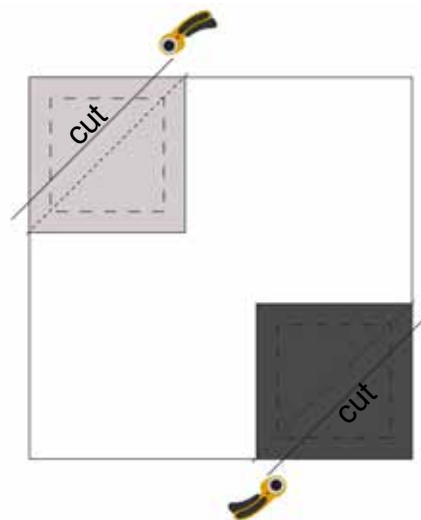
Next join all four squares, having the black/dark grey small squares at the center, see sketch.



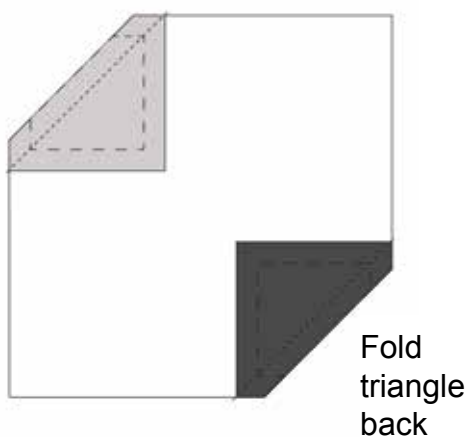
1.



2.



3.



4.



Finished square from front

Join the rest of the block B-H the same way.

Sew below amount of blocks according to sketch on page 4.

Block A (fabric A+M): 5 pcs

Block B (fabric E+G): 6 pcs

Block C (fabric D+F): 4 pcs

Block D (fabric I+K): 7 pcs

Block E (fabric C+O): 4 pcs

Block F (fabric G+I): 3 pcs

Block G (fabric H+J): 3 pcs

Block H (fabric B+N): 3 pcs

Position the blocks according to layout on page 4 or as you prefer and join them together. The quilt top is now created.

#### QUILTING AND BINDING:

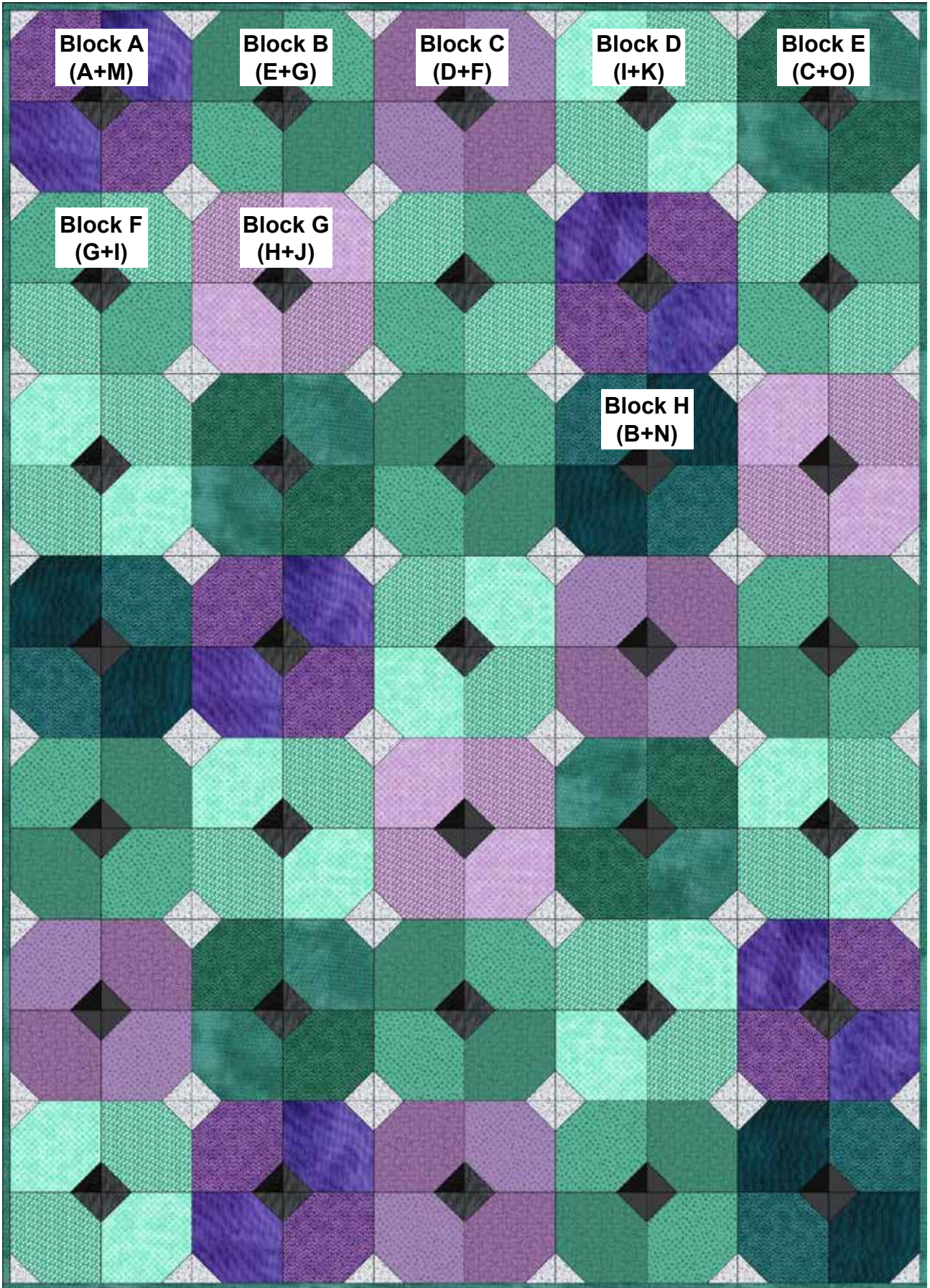
Layer top, batting and backing in fabric R and baste the pieces.

Quilt as you prefer by hand or by machine ➡.

Sew hanging sleeve in fabric R and place under top binding in fabric O ➡.

We wish you much success and pleasure with our fabrics and pattern.  
Your Team from STOF fabrics.





**Binding in  
fabric O**