

**Q-2079**



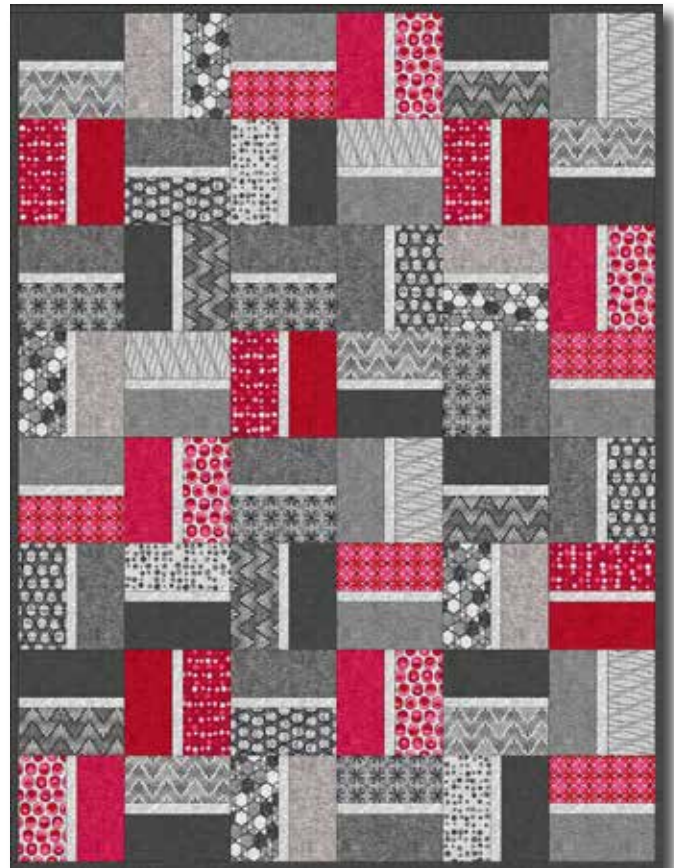
Beginner

## Vilma Quilt

48½ X 64" (123 x 163 cm)

### FABRIC REQUIREMENT:

Fabrics from series „Vilma” and „Melange”, both 44" (112 cm) wide and „Sevilla”, 59" (150 cm) wide.



### OTHER SUPPLIES:

Batting: Matilda's own 99M950 100% Bamboo 94½" (2,4 m) wide 54" (1,35 m)

In addition: Matching sewing and quilting thread.

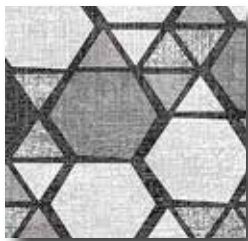
The Basics: Whenever this symbol ➡ appears in the directions, you will find a detailed explanation for "Sewing Basics" in the website [www.stofffabrics.com](http://www.stofffabrics.com) under the Gallery.

### CUTTING ➡:

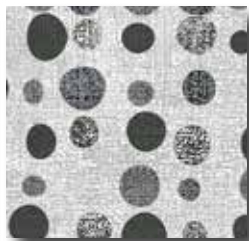
¼" (0,75 cm) seam allowance is included.

Fabric M:	10 Strips	1⅜ x 44" (3,5 x 112 cm)
Fabric A-L, N:	1 Strip each fabric	4¼ x 44" (10,5 x 112 cm)
Fabric O & P:	2 Strips each fabric	4¼ x 44" (10,5 x 112 cm)
Fabric Q:	3 Strips each fabric	4¼ x 44" (10,5 x 112 cm)

Fabric Q:	6 Strips	3¾ x 44" (9,5 x 112 cm) binding
		Note: binding is ⅝" (1,5 cm)



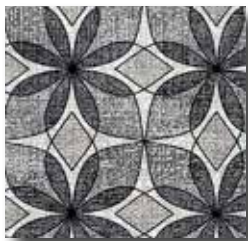
A: 4500-845  
6" (15 cm)



B: 4500-848  
6" (15 cm)



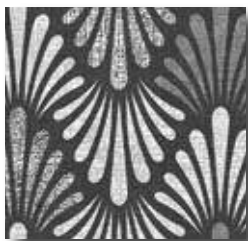
C: 4500-849  
6" (15 cm)



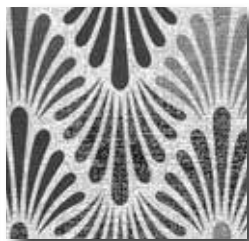
D: 4500-853  
6" (15 cm)



E: 4500-854  
6" (15 cm)



F: 4500-856  
6" (15 cm)



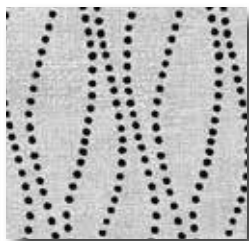
G: 4500-857  
6" (15 cm)



H: 4500-860  
6" (15 cm)



I: 4500-862  
6" (15 cm)



J: 4500-867  
6" (15 cm)



K: 4509-406  
6" (15 cm)



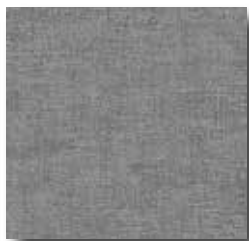
L: 4509-502  
6" (15 cm)



M: 4509-900  
18" (45 cm)



N: 4509-901  
6" (15 cm)



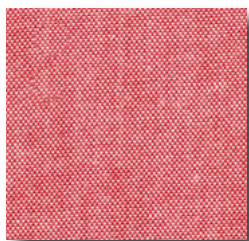
O: 4509-902  
12" (30 cm)



P: 4509-903  
12" (30 cm)



Q: 4509-905  
16" (40 cm)



R: 2758-024  
69" (1,75 m)

SEWING OF QUILT TOP: Seam allowance is 1/4" (0,75 cm).

Take 2 strips for instance fabric A & N.



Join these strips, having a small strip in fabric M between the two colours of fabrics.

Recut this strip in squares 8½" (21,5 cm). Also see beside sketch for sewing & cutting.



Join all strips as above.

For the combination of blocks, see layout on page 4 or list on top of page 3.



List of how many squares from each strip:

Block A+N: 5 pcs

Block B+Q: 3 pcs

Block C+K: 5 pcs

Block D+P: 5 pcs

Block E+O: 5 pcs

Block F+Q: 5 pcs

Block G+Q: 5 pcs

Block H+P: 5 pcs

Block I+L: 5 pcs

Block J+O: 5 pcs

Position the squares according to layout on page 4 or as you prefer.

First join the squares into rows. Second join the rows into quilt piece.

#### QUILTING AND BINDING:

Layer top, batting and backing in fabric R and baste the pieces.

Quilt as you prefer by hand or by machine ➡.

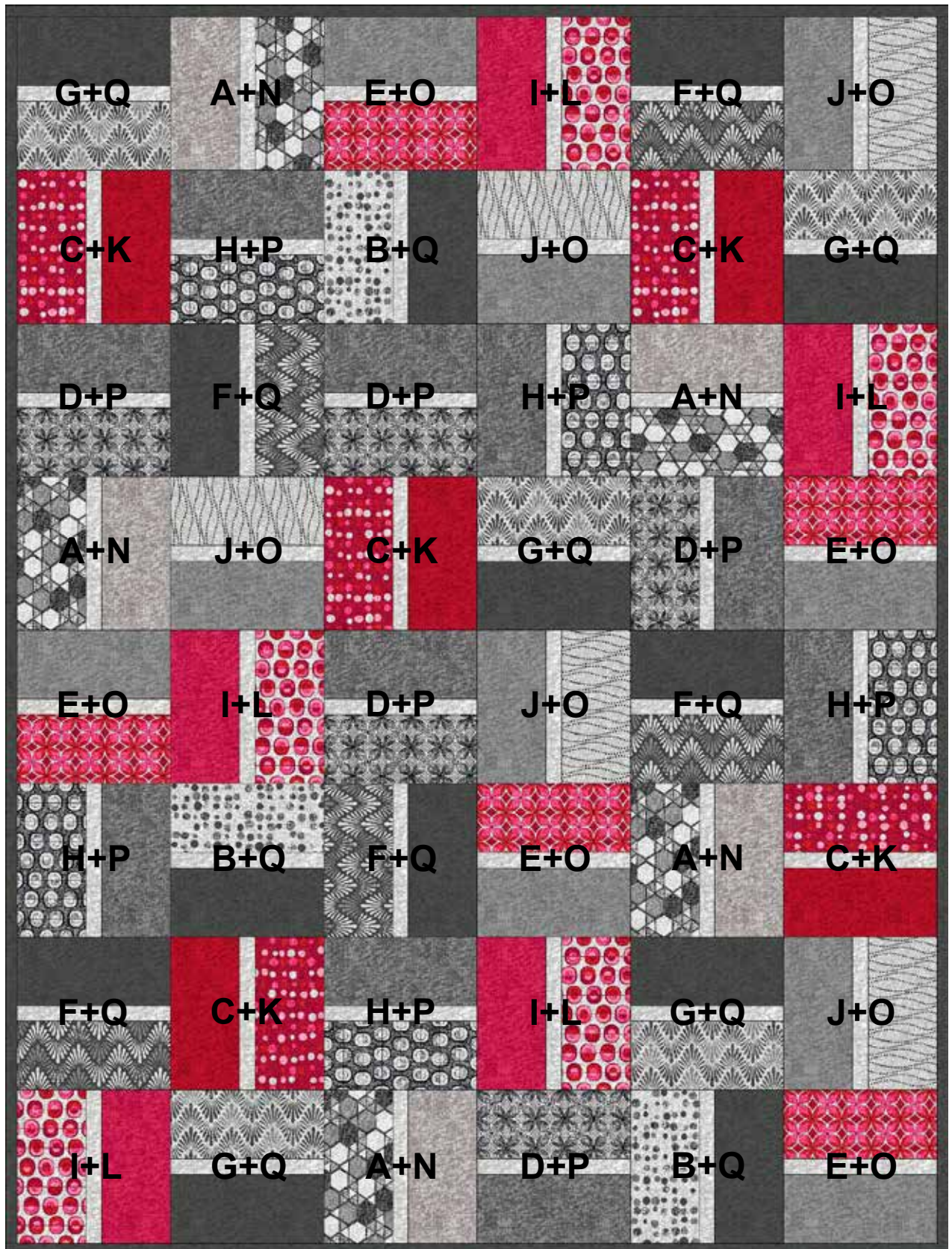
Sew hanging sleeve in fabric R and place under top binding in fabric Q ➡.

Note: binding is  $\frac{5}{8}$ " (1,5 cm)

We wish you much success and pleasure with our fabrics and pattern.

Your Team from STOF fabrics.





Binding is  
fabric Q.