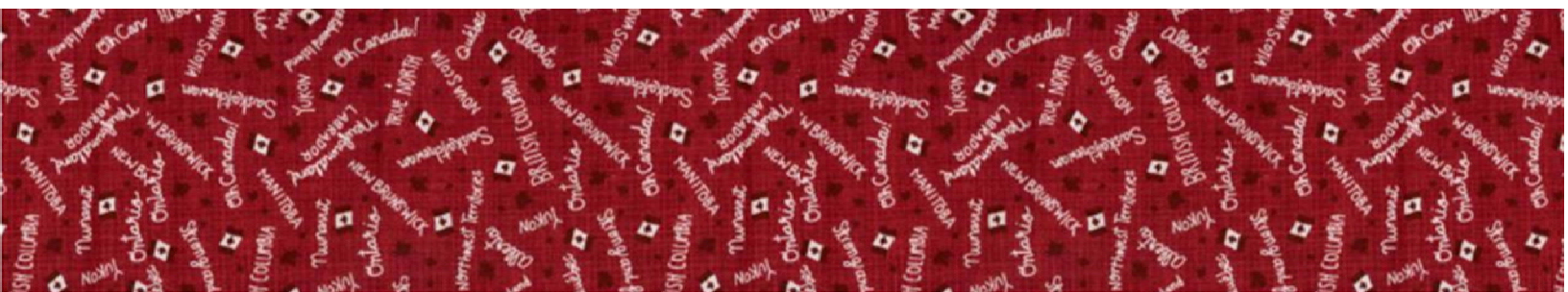


“MY TRUE NORTH” TABLE RUNNER AND PLACEMATS

TrendTex

Fabric Line: True North, Designed by Kate & Birdie exclusively for
TrendTex by Moda



My True North Table Runner & Placemats

Finish Measurement 18½" X 65"

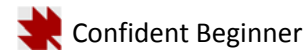
Placemats: 18½" x 12"

Read all instructions prior to cutting. Wash fabrics and spray and press with a fabric stabilizer, such as Best Press. All seams are ¼" unless otherwise stated. (Label all pieces for each cut)

WOF (Width of Fabric)

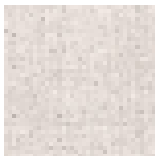
LOF (Length of Fabric)

HST (Half Square Triangles)



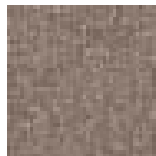
Confident Beginner

Fabric Requirements



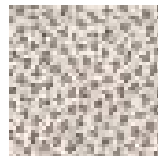
513185-13

2.55m



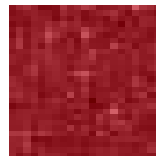
513185-16

1 FQ



513184-15

1 FQ



513185-11

.10m



513182-11

1.35m



513180-14

.50 m



513180-12

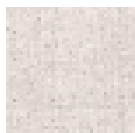
.50m

(included binding)

Batting: 1.00 (96" wide)

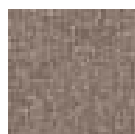
Backing: 1.50m (pieced)

Cutting Instructions – Table Runner (label all)



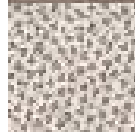
Cream background

- Cut (1) 10½" x 18½" rectangle (centre of runner)
- Cut (2) 6½" x 18½" rectangles (ends of runner)
- Cut (6) 2½" x 18½" rectangles (in between strips)
- Cut (1) 4½" x 10" rectangle (sky)
- Cut (1) 1½" x 10" rectangle (sky)
- Cut (1) 1½" x WOF – sub-cut into (12) 1½" squares (sky HST)
- Cut (1) 1½" x 15" (window section)



Taupe fabric

- Cut (6) 6½" x 3½" rectangles (roof)
- Cut (1) 1½" x 10" rectangle (chimney)



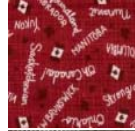
Grey Leaves

- Cut (6) 1½" x 6½" strips (house below roof line)
- Cut (1) 2" x 15" strip – sub-cut into (house/window section)
- Cut (2) 1¾" x 17" strip (House/door section)
- Cut (1) 1" x 17" strip (house/door/house section)



Red Speckle

- Cut (6) 2" x 2¾" rectangles
- Cut (1) 1" x 17" strip



Red Print

- Cut (4) 2½" x WOF (binding)
- Cut (2) 2½" x 18½" rectangles



Taupe Border

Fussy Cut (2) 3-1/8" x 18½" rectangles



Cream Border

Fussy Cut (2) 3-1/8" x 18½" rectangles

Cutting Instructions: Placemat (label all)

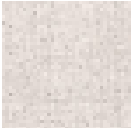



	Cream background	Cut (4) 8" x 12 1/2" rectangles Cut (8) 1 1/2" x 12 1/2" strips Cut (4) 2" x 12 1/2" strips
	Red Print	Cut (8) 2 1/2" x WOF (binding) (2 for each placemat) Cut (4) 2 3/4" x 12 1/2"
	Taupe Border Print	Fussy Cut (4) 3-1/8" x 12 1/2"
	Cream Broder Print	Fussy Cut (4) 3-1/8" x 12 1/2"

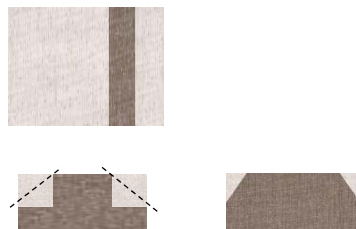
Table Runner – House

Step 1 – Chimney section: Sew together the following together to make the sky/chimney segment as shown
 4 1/2" x 10" rectangle (sky)
 1 1/2" x 10" rectangle (chimney)
 1 1/2" x 10" rectangle (sky)
 Press the seams towards the chimney fabric
 Sub-cut the segment into (6) 1 1/2" strips



Step 2 – Roof/Sky section

- Place a 1 1/2" square right sides together on either Side of the 6 1/2" x 3 1/2" rectangle as shown
- Sew on the diagonal as shown. Set the seam and fold the fabric along the seam line and press to create a HST (half square triangle) (make 5 more)



Step 3 – House (window section)

- Sew together the 1 1/2" x 15" (window strip) Together with the 2" x 15" house/window section) as shown
- Set seam, press towards the leaf fabric.
- Sub-cut into (6) 2 1/2" segments



Step 4- House/door/house section

Sew together the grey leaf 1" x 17" strip together with the red speckle 1" x 17" strip. Set seam and press towards the grey leaf fabric
 Sew to the right of the red speckle door the 1 3/4" x 17" strip, set seam And press toward the grey leaf fabric. Sub-cut into (6) 2 3/4" segments



Step 5 – Sew together the (door section to the window section)

Sew the 2" x 2 3/4" rectangles to the right of the door/window)

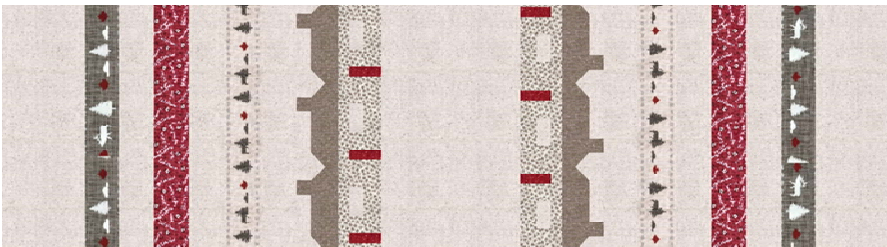




House block layout – Sew the sections together, set seams and square up to 6½" (make 6) Sew 3 houses together (make 2).



Layout table runner as shown. Using a ¼" seam, sew together. Note: Make sure that you place the border strips facing the centre of the quilt as shown before sewing.



Quilt and add binding.

Placemats:

Layout your fabric strips as shown and sew together. Press (make 4 sets), quilt and adding binding.

8" 3-1/8" 1½" 2¾" 1½" 3-1/8" 2"

