

Little Crackins

Read all instructions prior to starting. All seams are $\frac{1}{4}$ " unless otherwise stated

Supply requirements

.50 m Background fabric
8" square – Yellow fabric
Variety of scrap fabrics - 6" x 11" (we used 8 colours in this project)
Scraps of felted wool in orange and black (for eyes and beaks)
.50 Steam-a-seam
Black Micron pen

Cutting Instructions

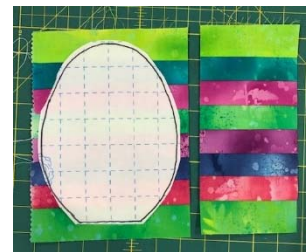
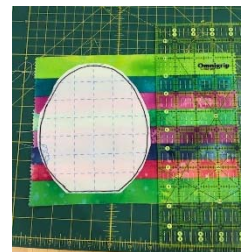
Background fabric	Cut (1) 11" x 28 $\frac{1}{2}$ " rectangle Cut (3) 2" x WOF (border) Sub-cut into (2) 2" x 21" – side borders (2) 2" X 5 $\frac{1}{2}$ " – top and bottom borders Cut (3) 2 $\frac{1}{2}$ " x WOF (binding) Cut (2) 2" squares
Scrap Fabrics	Cut (3) of each colour – 1 $\frac{1}{2}$ " x 11" strips (we stacked our fabric and cut 3 sets of 8 - 1 $\frac{1}{2}$ " x 11" strips for each egg)
Felted wool	Press the steam-a-seam to the black wool and cut out 6 small circles for the eyes Press the wool to steam-a-seam to the orange wool and cut out 3 small beaks

Instructions

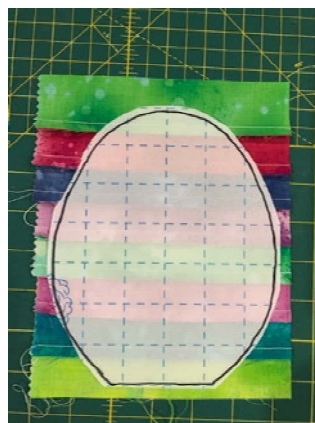
1. Lay out the 8 - 1 $\frac{1}{2}$ " x 11" strips and sew together. Make 3 – 8 Strip set. Press all the seams in one direction.



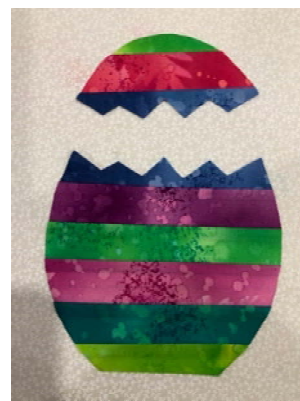
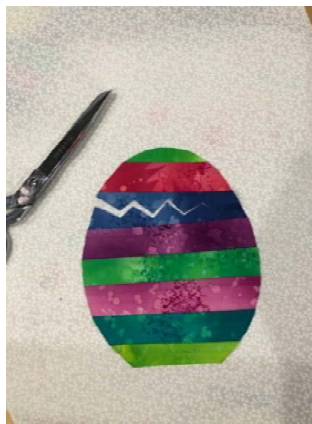
2. Trace the egg template onto steam-a-seam 3 times. Roughly cut out and temporary place onto the 8-strip set as shown. Measure and cut a 4" strip from strip set from the right side of strip set (this will be part of the outer borders). Repeat this on a second strip set.



3. Flip over the wider strip set to the wrong side, centre the Steam-a-seam egg template and press into place. Cut out along The drawn line. (Make 3) strip eggs.



4. Cut a zigzag across each egg with a pair of scissors as shown to get the "cracked" look.



5. Trace the chick templates onto steam as seam. Place onto the 8" yellow fabric, press into place and cut out along the line.

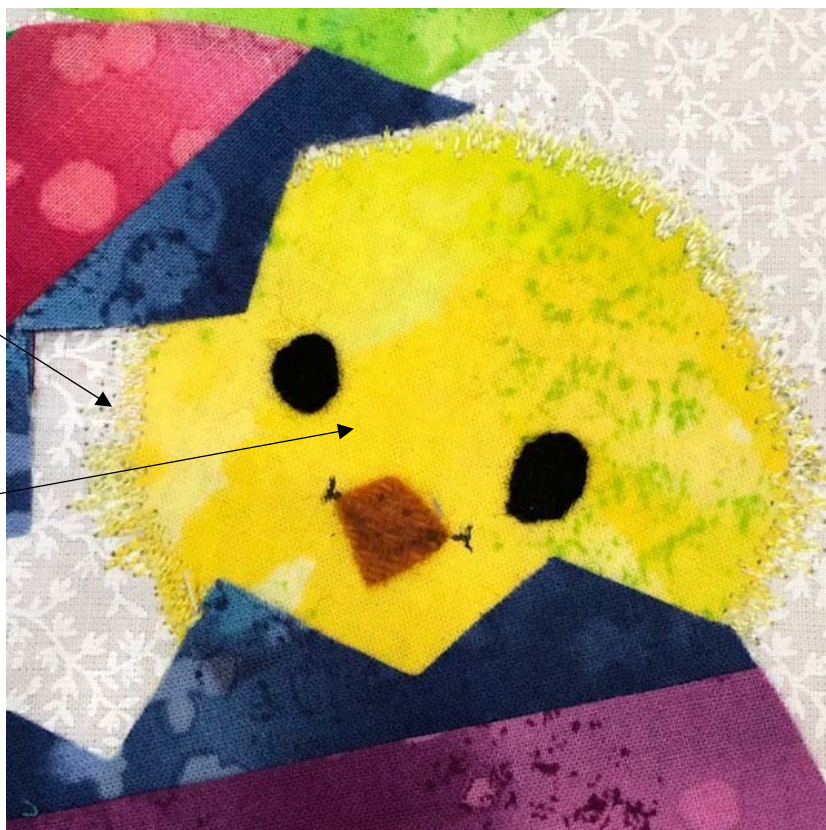
Lay out the eggs and chicks as shown and press into place.



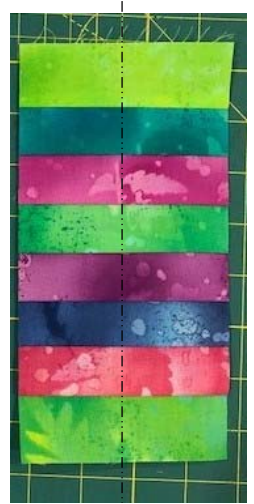
6. Set up your machine for free motion and With yellow thread, scribble stitch the outer edges of the chick to create little feathers. (To do this, just move the fabric in a back and forth motion around the edge as shown.)

7. Next, iron the eyes and beak into place. Using the black micron pen, make 2 little dots on the beak and little smile lines on the side.

8. Stitch the eggs in place using a blanket stitch.



9. Cut the 2 – 4" strip sets into half lengthwise to create two (2") strip sets (making 4)



10. Borders – sew 1 – 2" strip set to 1 – 2" x 21" border strip. (make 2)
Sew to the sides of the centre applique. Press seams to centre.

Sew 1 – 2" strip set to 1 – 2" x 5½" border strip (make 2)
Add 1 – 2" square to the opposite end (make 2)
Sew these to the top and bottom and press
Seams to the centre.

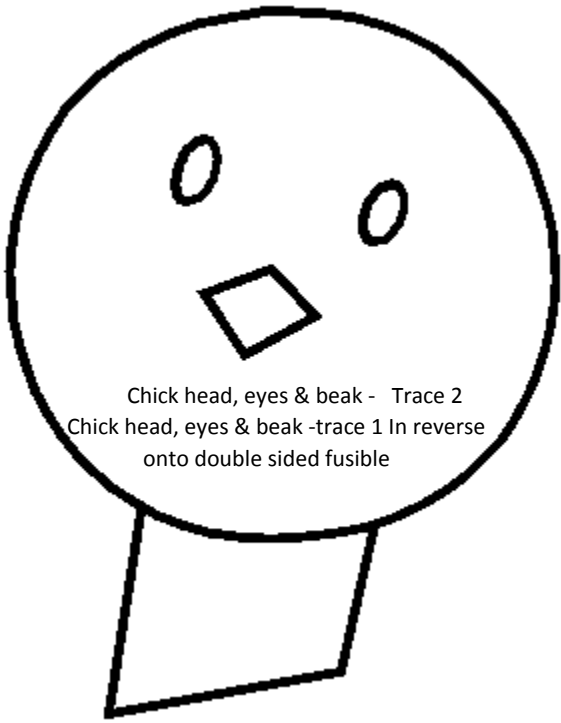
Sandwich and quilt.

Add binding and your done!

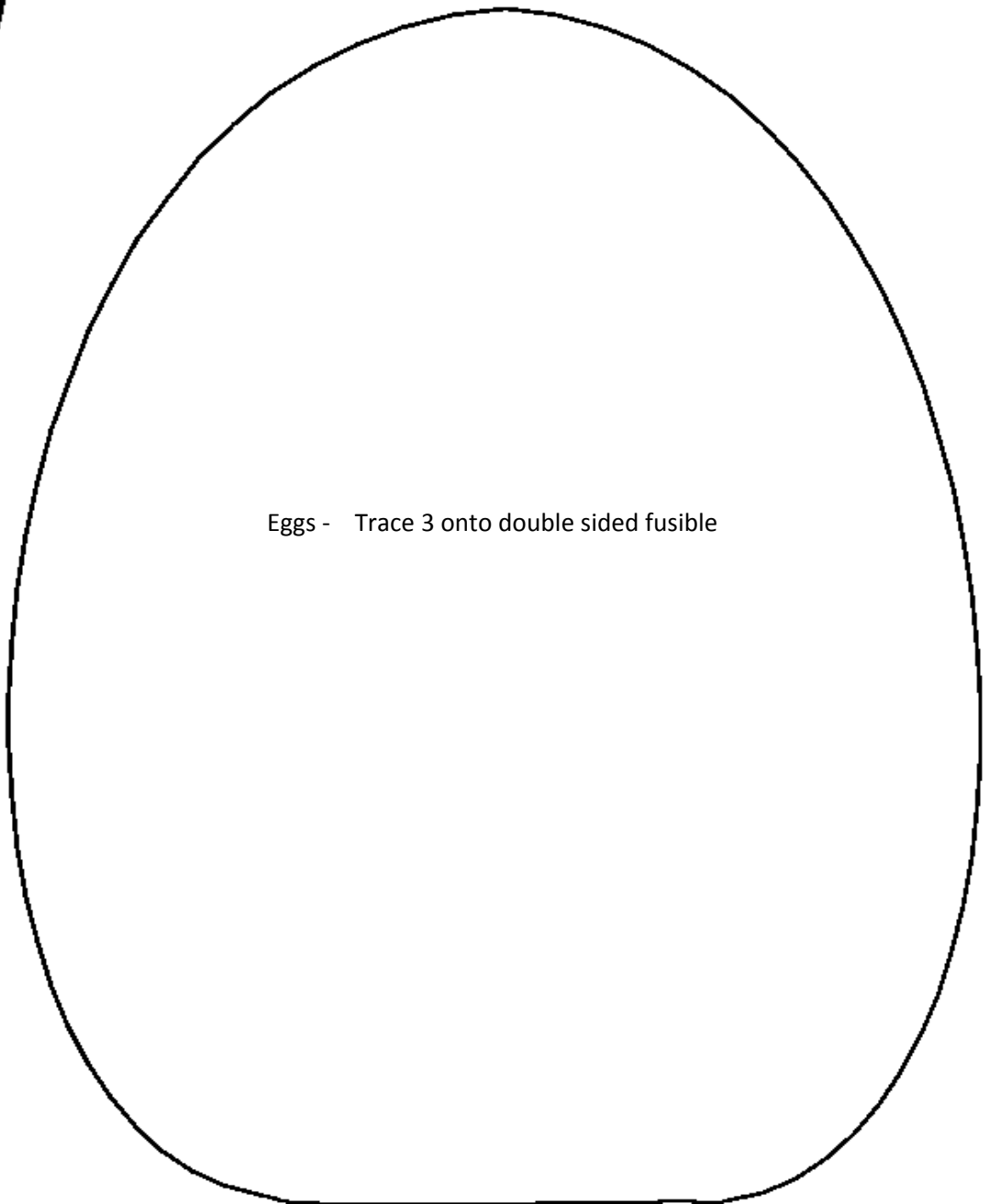


Enjoy!

Templates



Chick head, eyes & beak - Trace 2
Chick head, eyes & beak -trace 1 In reverse
onto double sided fusible



Eggs - Trace 3 onto double sided fusible